

Business integration in Africa region and its challenges

7th July, 2021

Hitachi Construction Machinery Co.,Ltd.
Senior Vice President and Executive Officer
President, Mining Group
Sonosuke Ishii

Mining Support Business Model and Re-manufacturing parts

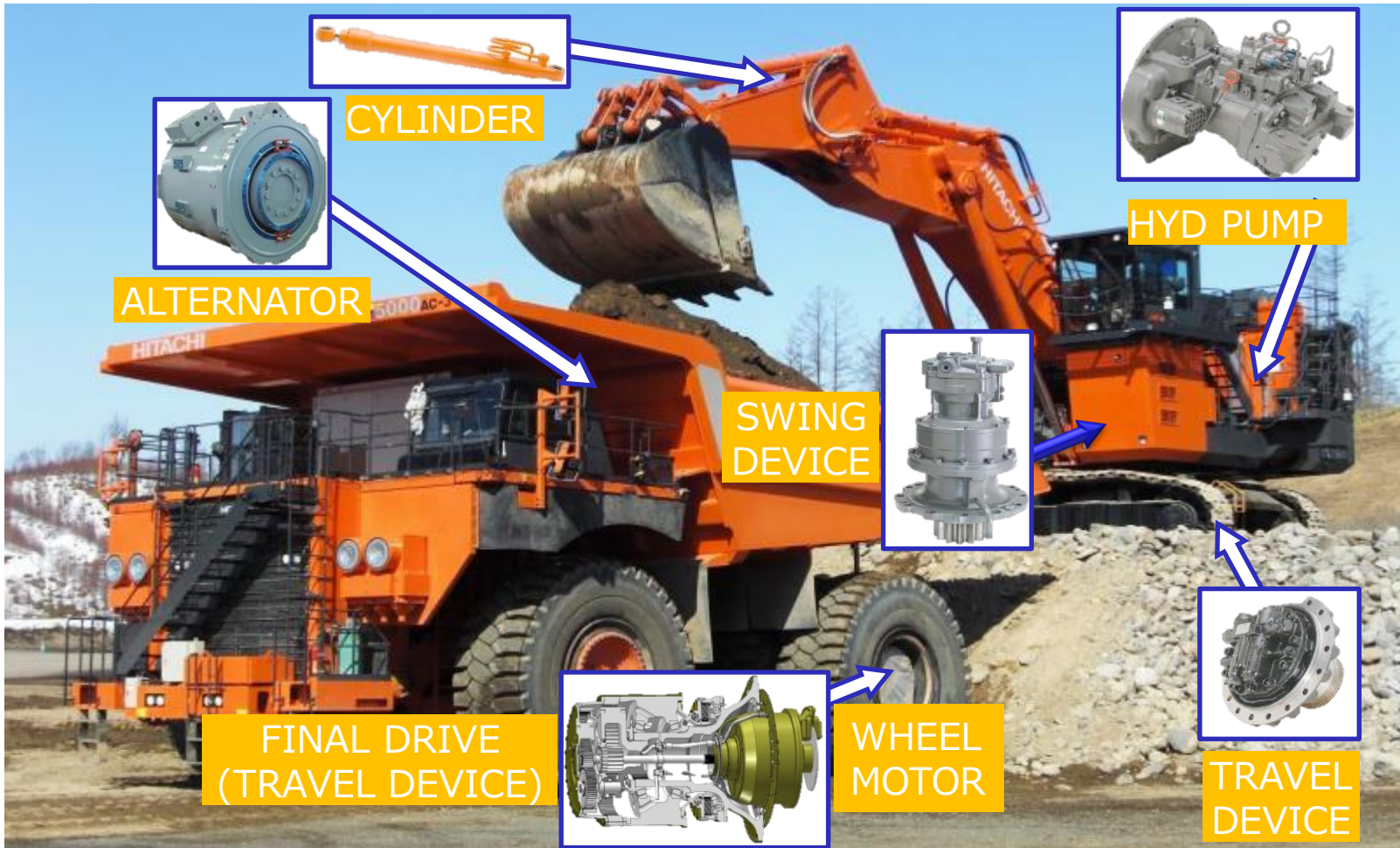
Machine operates up to 7,000hrs/Year

<Requirement by Customer>

- ✓Competitive Local Support
- ✓Periodical Parts Replace



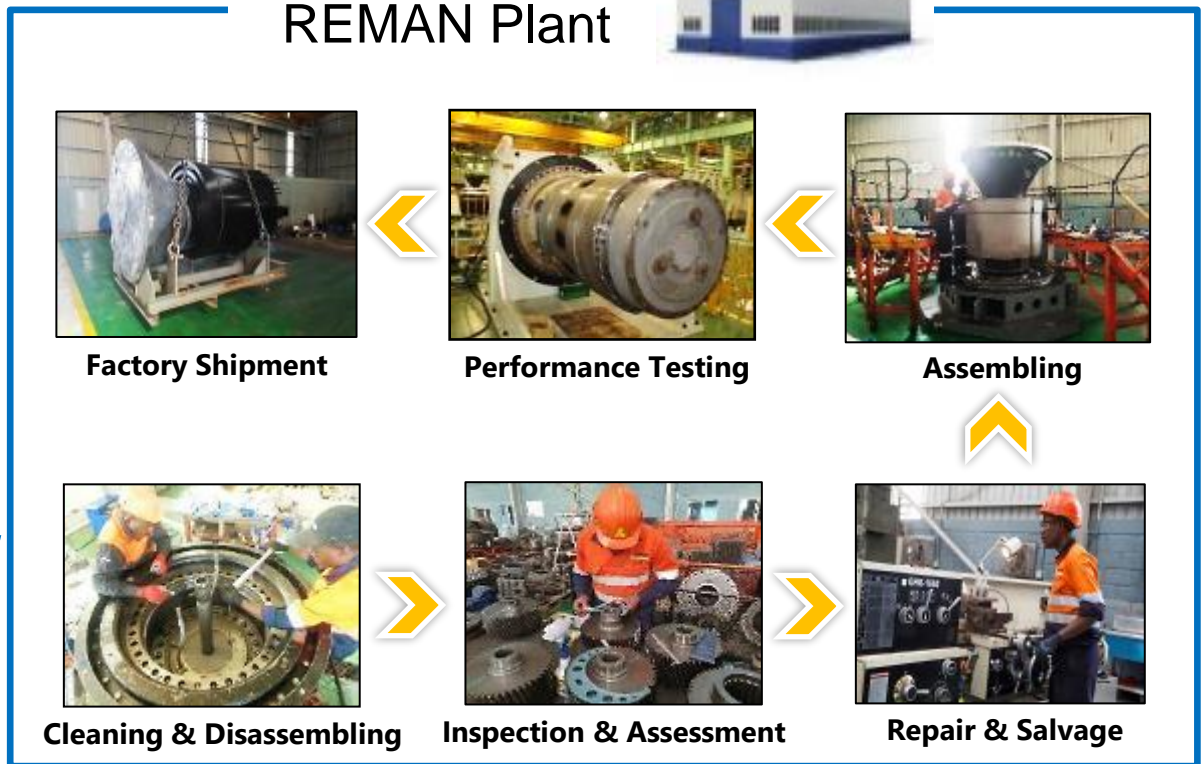
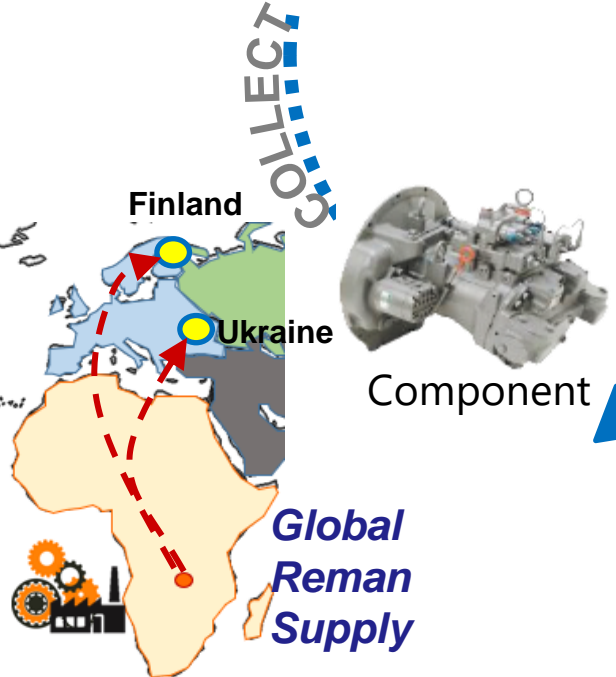
Re-manufacturing parts are essential in order to Supply Parts in Appropriate Pricing and Lead Time





RETURN

Zambia / Lusaka
REMAN Plant



Challenges to expand Zambia operation to regional operation



A Long waiting period for Customs clearance
Waiting time : 1~2days



Physical Inspection by unpacking
Risk of theft / damage of products



B Ferry required to cross river



C Waiting for 10-12 days for ferry

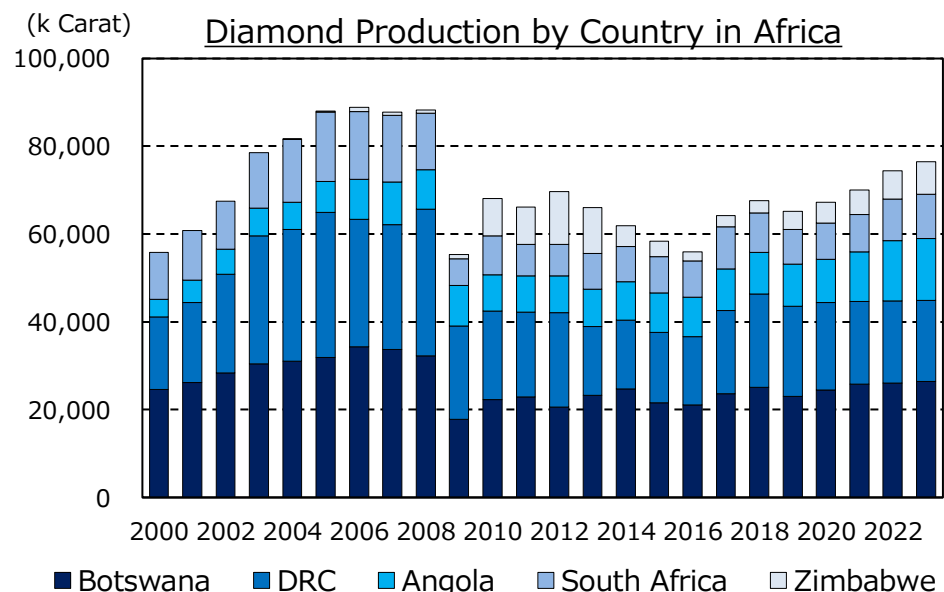
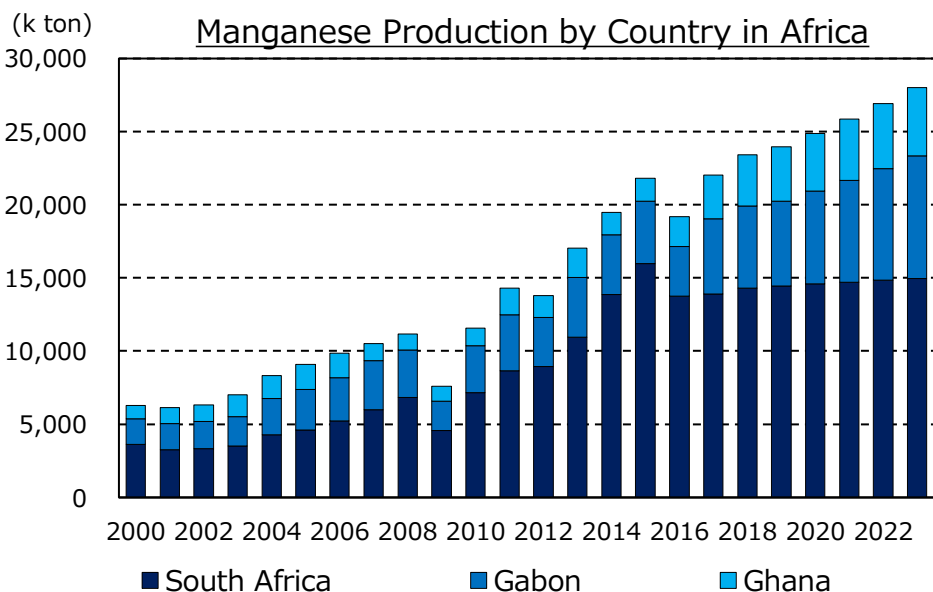
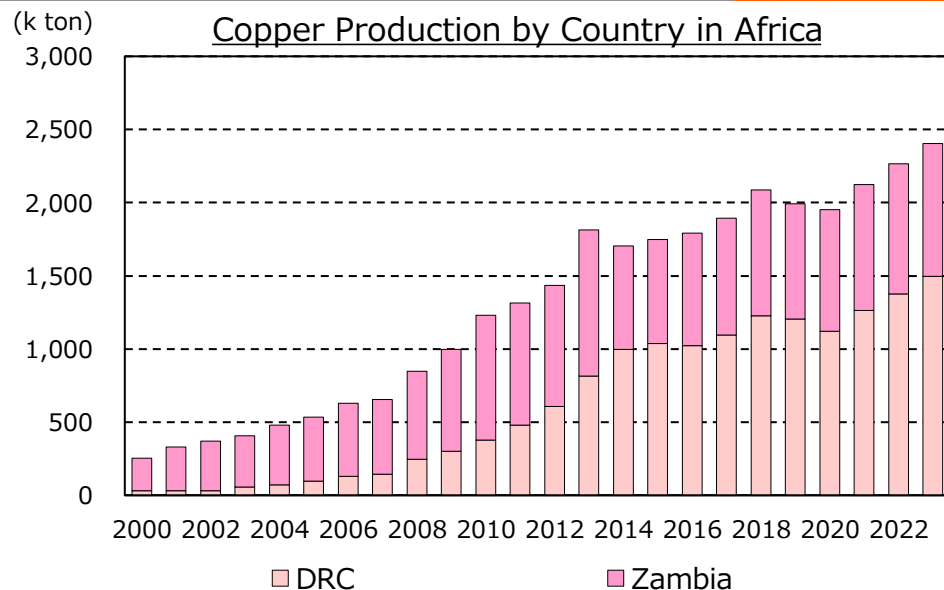
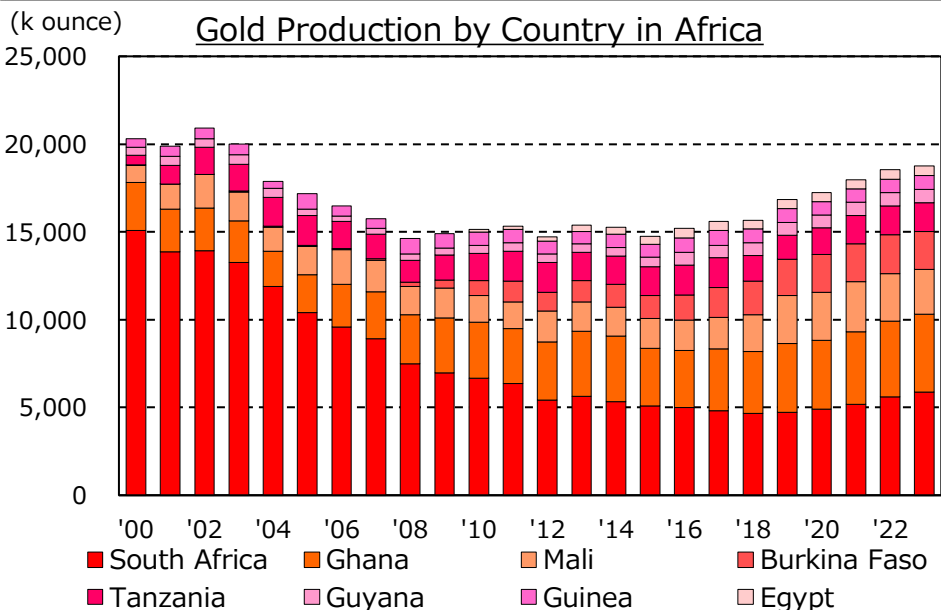
Challenges

- A** Efficient customs clearance system between to-and-from Zambia
- B** Construct robust transportation road and bridge (e.g. Kazungula Bridge Project)
- C** Increase transportation road capacity



Kazungula Bridge Project
(Officially opened on May 11, 2021)

Production of Natural Resources in Africa



END

Business integration in Africa region
and its challenges

 **Hitachi Construction Machinery Co., Ltd.**

7th July, 2021