



**AFRICAN DEVELOPMENT BANK GROUP**

---

**Weekly Highlights on Trends of Selected Commodity Prices and  
Exchange Rates of Major Currencies<sup>1</sup>:**  
*The situation as of Friday, May 13, 2022*

**Statistics Department (ECST)**

---

<sup>1</sup> This briefing note has been prepared by Roza Mamuye Bora, Senior Statistician; Anouar Chaouch, Statistician; and Robert Maate, Chief Statistician under the supervision of Louis Kouakou, Division Manager ECST.1

# Contents

	Page
Highlights	1
Data Annexes: Weekly Price Movements of Selected Commodities	2
Data Annexes: Weekly Price Movements of Selected Commodities Since 21 February 2022	3
Data Annexes: Weekly Rates Movements of Selected Exchange Rates	4

## Weekly Highlights on Trends of Selected Commodity Prices and Exchange Rates of Major Currencies — Week Ending May 13, 2022

International prices for commodities such as fuel, agricultural and metal products remain volatile due to various global socio-economic and political trends, which have persisted over the past two months. In the week ending May 13, 2022, prices of most commodities continued to fluctuate on a weekly basis and were higher compared to their levels in February 2022 and the same period of 2021.

### Energy

**As of May 13, 2022, international prices of Brent crude oil and natural gas declined by 0.7 percent and 4.7 percent respectively, compared to the preceding week; however, a weekly price increase of 0.7 percent was recorded for WTI crude oil.** Compared to the same period of last year, prices of Brent and WTI crude oil increased by 75.6 and 84.1 percent respectively, while the price of natural gas tripled during the same period. Similarly, in contrast to their levels on February 24, 2022, prices of Brent crude oil, WTI crude oil, and natural gas increased by 22.4 percent, 24.4 percent and 63.1 percent respectively.

### Metals

**International prices of selected metals—specifically nickel, silver, gold, copper and platinum declined by varying degrees during the week ending May 13, 2022.** The recorded price declines were 9.4 percent (nickel), 5.6 percent (silver), 3.8 percent (gold), 2.7 percent (copper) and 1.7 percent (platinum). On a year-on-year comparison, prices of silver, platinum, copper and gold declined by 22 percent, 21.6 percent, 11.4 percent and 0.8 percent respectively. The price of nickel was higher by 57.4 percent compared to its level a year ago. Similarly, compared to February 24, 2022, all metals under review, except nickel, recorded lower prices.

### Agricultural Commodities

**International prices of wheat HRW, rice, cotton, coffee arabica, corn CBT and sugar recorded weekly increases of varying magnitudes ranging between 9.5 percent for wheat and 0.1 percent for sugar, while the price of cocoa declined by 0.7 percent.** On an annual basis, prices of all selected agricultural commodities recorded increases; the highest price increase was for wheat HRW at 96.9 percent followed by cotton at 76.6 percent, coffee arabica at 46.2 percent, rice at 28.4 percent, sugar at 21.1 percent, corn CBT at 10.5 percent, and cocoa at 0.9 percent. World prices of selected agricultural commodities remained higher on May 13, 2022, compared to their levels on February 24, 2022, except for coffee arabica and cocoa, which were lower by 11.1 percent and 3.7 percent respectively.

### Fertilizers

As of May 13, 2022, international prices of phosphoric rock, TSP and DAP were higher than their levels a year ago by 150 percent, 100 percent and 48.3 percent respectively. However, on a weekly basis, world prices of phosphoric rock remained unchanged, although the price of TSP and DAP declined by 6.6 percent and 1.1 percent respectively. Compared to their prices on February 24, 2022, an increase of 34.1 percent was recorded for phosphoric rock followed by TSP (33.8 percent), while that of DAP declined by 0.6 percent.

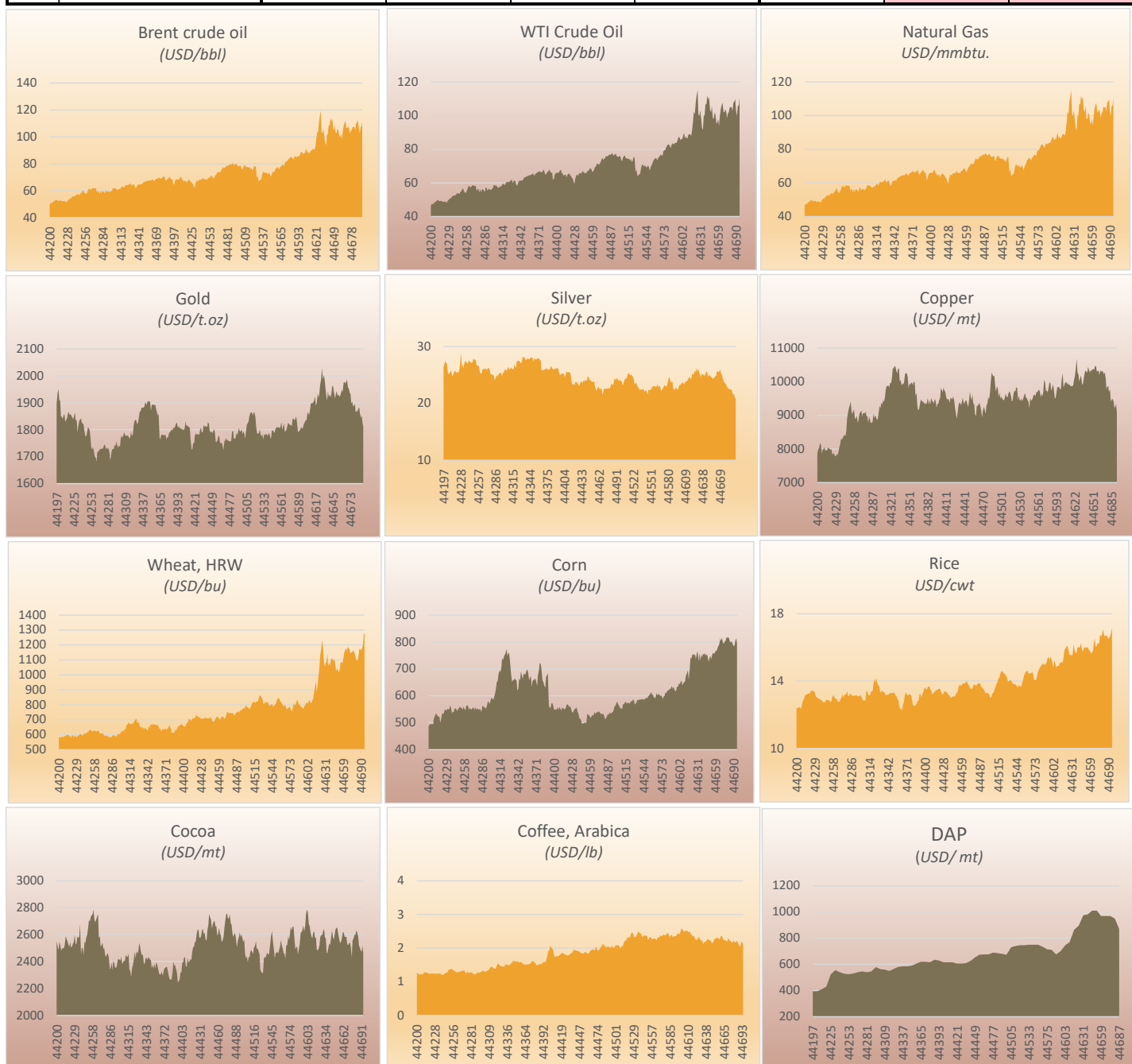
## Exchange Rate Fluctuations

During the week ending May 13, 2022, the major global currencies, specifically the Euro, British Pound (GBP), Yen (JPY) and Chinese Yuan (CNH) registered depreciations against the US dollar (USD), on a year-on-year basis, of 13.8 percent, 12.8 percent, 15.4 percent and 5.1 percent respectively. On the other hand, during the same time period, the Russian Ruble (RUB) appreciated by 13.2 percent against the USD. Compared to their rates on February 24, 2022, higher appreciation of the Russian RUB against the USD at 33.5 percent was recorded in the week ending May 13, 2022, while the other four currencies depreciated during the same period. On a weekly basis, the JPY and RUB recorded an appreciation of 0.8 percent and 4.0 percent respectively against the USD, while the Euro, GBP and CNH, recorded further depreciations of 1.5 percent, 1.0 percent and 1.3 percent respectively during the same period.

**Exchange rate trends for currencies of most African countries exhibited varying fluctuations** against the USD. Of the 37 African currencies with updated data on exchange rate movements, 11 currencies recorded appreciations, while the rest depreciated against the USD on a weekly basis as of May 13, 2022. The highest weekly currency appreciation was recorded for Egypt at 0.9 percent, while the highest depreciation was recorded for Zimbabwe at 4.2 percent. On a year-on-year basis, six African countries recorded appreciation in their currencies against the USD, while the rest recorded depreciations. Twenty-one (21) African currencies depreciated by more than 5.0 percent on annual basis with the highest record of 59.1 percent in South Sudan. Six countries recorded appreciations ranging between 59.6 percent in Angola and 0.2 percent in Somalia.

Weekly Highlights on Price Movements of Selected Commodities - Week ending 13 May 2022

Commodity	Units	Prices				% change		
		Value at end of (13/05/2022)	Value at end of (06/05/2022)	Benchmark (24/02/2022)	Value at end of (13/05/2021)	Weekly	Benchmark (24/02/2022)	Annual
<b>Energy</b>								
Brent Crude Oil	USD/bbl.	111.6	112.4	91.2	63.5	-0.7	22.4	75.6
WTI Crude Oil	USD/bbl.	110.5	109.8	88.8	60.0	0.7	24.4	84.1
Natural Gas	USD/mmbtu.	7.7	8.0	4.7	2.6	-4.7	63.1	196.6
<b>Metals</b>								
Gold	USD/t.oz	1,811.8	1,883.8	1,923.7	1,826.2	-3.8	-5.8	-0.8
Silver	USD/t.oz	21.1	22.4	24.7	27.1	-5.6	-14.5	-22.0
Platinum	USD/t.oz	946.3	962.2	1,064.1	1,207.6	-1.7	-11.1	-21.6
Copper	USD/mt	9,159.0	9,414.5	9,864.0	10,342.0	-2.7	-7.1	-11.4
Nickel	USD/mt	27,262.0	30,076.0	24,716.0	17,323.0	-9.4	10.3	57.4
<b>Agriculture</b>								
Wheat, HRW	USD/bu.	1,282.0	1,170.5	956.3	651.0	9.5	34.1	96.9
Corn, CBT	USD/bu.	794.5	792.3	695.0	719.0	0.3	14.3	10.5
Cocoa	USD/mt	2,483.0	2,500.0	2,578.0	2,461.0	-0.7	-3.7	0.9
Coffee, Arabica	USD/lb	212.9	211.6	239.4	145.7	0.6	-11.1	46.2
Rice	USD/cwt	17.2	16.6	15.1	13.4	3.2	13.4	28.4
Sugar	USD/lb	19.2	19.2	17.8	15.8	0.1	8.0	21.1
Cotton	USD/lb	145.2	143.6	116.2	82.2	1.1	24.9	76.6
<b>Fertilizers</b>								
DAP	USD/mt	860.0	870.0	865.0	580.0	-1.1	-0.6	48.3
TSP	USD/mt	990.0	1,060.0	740.0	495.0	-6.6	33.8	100.0
Phosphoric Rock	USD/mt	275.0	275.0	205.0	110.0	0.0	34.1	150.0



Sources: AFDB Statistics Department and Bloomberg

Notes: bbl = barrel; mmbtu = million British thermal units; t.oz = troy oz; cwt= Hunderweight; bu= Bushel; MT = Metric Ton; lb= Pound

**Daily Highlights on Price of Selected Commodities**

	<b>Brent Crude Oil</b>	<b>WTI Crude Oil</b>	<b>Natural Gas</b>	<b>Gold</b>	<b>Silver</b>	<b>Platinum</b>	<b>Copper</b>	<b>Nickel</b>	<b>Wheat, HRW</b>	<b>Corn, CBT</b>	<b>Cocoa</b>	<b>Coffee, Arabica</b>	<b>Rice</b>	<b>Sugar</b>	<b>Cotton</b>
	<i>USD/bbl.</i>	<i>USD/bbl.</i>	<i>USD/mmbtu.</i>	<i>USD/t.oz</i>	<i>USD/t.oz</i>	<i>USD/t.oz</i>	<i>USD/mt</i>	<i>USD/mt</i>	<i>USD/bu.</i>	<i>USD/bu.</i>	<i>USD/mt</i>	<i>USD/lb</i>	<i>USD/cwt</i>	<i>USD/lb</i>	<i>USD/lb</i>
21-Feb-22	89.7	...	...	1,897.7	23.9	1,073.7	9,898.0	24,349.0	...	...	...	...	...	...	...
22-Feb-22	90.2	88.7	4.5	1,903.4	24.3	1,085.1	9,915.0	24,558.0	886.5	674.8	2,611.0	248.5	15.1	17.7	117.4
23-Feb-22	90.8	89.1	4.6	1,908.4	24.5	1,093.3	9,866.0	24,396.0	916.3	683.8	2,626.0	248.6	15.1	17.7	118.4
24-Feb-22	91.2	88.8	4.7	1,923.7	24.7	1,064.1	9,864.0	24,716.0	956.3	695.0	2,578.0	239.4	15.1	17.8	116.2
25-Feb-22	90.1	87.9	4.5	1,889.3	24.3	1,059.4	9,873.0	24,361.0	881.3	659.5	2,576.0	240.1	15.1	17.5	115.3
28-Feb-22	92.9	91.0	4.5	1,899.3	24.4	1,042.9	9,883.5	24,282.0	940.8	697.5	2,491.0	234.3	15.4	17.5	115.8
1-Mar-22	98.0	96.2	4.6	1,934.9	25.3	1,054.7	10,061.5	25,103.0	990.8	739.8	2,483.0	237.3	15.9	18.1	119.2
2-Mar-22	104.2	102.4	4.8	1,918.7	25.1	1,065.7	10,166.0	25,879.0	1,058.0	739.0	2,491.0	230.5	15.9	18.5	115.1
3-Mar-22	103.0	100.7	4.8	1,932.0	25.1	1,080.1	10,351.0	26,897.0	1,133.0	751.3	2,524.0	224.2	16.0	18.7	115.9
4-Mar-22	110.9	108.1	5.1	1,970.7	25.7	1,128.1	10,674.0	28,919.0	1,174.5	756.5	2,582.0	224.2	16.1	19.1	113.1
7-Mar-22	115.1	111.7	4.9	1,984.2	25.4	1,119.2	10,281.5	48,078.0	1,233.8	749.3	2,597.0	225.5	15.9	19.1	112.7
8-Mar-22	119.3	115.2	4.6	2,029.9	26.2	1,142.6	10,209.0	...	1,178.3	754.5	2,597.0	234.1	15.7	19.3	113.5
9-Mar-22	103.5	101.0	4.6	1,985.6	25.6	1,084.9	10,001.5	...	1,093.3	735.0	2,624.0	230.5	15.5	18.9	113.2
10-Mar-22	102.4	99.6	4.7	2,004.0	26.0	1,081.3	10,117.0	...	1,054.3	757.8	2,643.0	225.2	15.6	19.1	113.0
11-Mar-22	106.2	103.2	4.8	1,988.5	25.9	1,082.1	10,183.5	...	1,081.0	764.5	2,580.0	223.0	15.5	19.2	116.8
14-Mar-22	100.6	98.4	4.8	1,957.9	25.1	1,043.9	9,935.0	...	1,085.5	728.3	2,571.0	219.7	15.6	19.1	115.1
15-Mar-22	95.6	92.8	4.7	1,924.4	25.0	996.7	9,904.0	...	1,143.5	758.0	2,461.0	212.3	16.2	18.7	115.1
16-Mar-22	93.7	91.6	4.8	1,908.1	24.6	1,008.3	10,054.0	45,590.0	1,058.5	730.0	2,471.0	218.6	15.9	18.5	116.0
17-Mar-22	101.0	99.4	5.1	1,942.5	25.3	1,026.4	10,243.0	41,945.0	1,083.3	754.5	2,504.0	217.3	15.7	18.6	118.1
18-Mar-22	102.5	100.7	4.9	1,921.6	25.0	1,027.0	10,331.0	36,915.0	1,062.0	741.8	2,537.0	220.3	15.6	18.8	123.0
21-Mar-22	108.6	107.1	5.0	1,932.0	25.1	1,042.8	10,295.0	31,380.0	1,103.3	756.3	2,521.0	225.9	15.9	19.2	126.2
22-Mar-22	108.5	106.6	5.3	1,920.5	24.8	1,024.1	10,268.0	28,159.0	1,109.8	753.0	2,586.0	225.1	16.0	19.1	126.3
23-Mar-22	113.9	112.0	5.3	1,936.7	25.1	1,019.7	10,438.5	32,380.0	1,105.5	757.8	2,631.0	225.3	16.0	19.2	126.3
24-Mar-22	111.5	109.4	5.5	1,965.0	25.6	1,029.4	10,349.5	37,235.0	1,090.3	748.3	2,583.0	221.9	16.0	19.2	127.4
25-Mar-22	113.6	111.1	5.7	1,958.3	25.5	1,005.4	10,267.0	35,491.0	1,107.0	754.0	2,562.0	221.9	16.3	19.5	132.4
28-Mar-22	106.2	103.4	5.6	1,938.5	25.1	992.9	10,341.0	32,725.0	1,069.5	748.5	2,602.0	214.6	16.0	19.5	135.3
29-Mar-22	104.7	102.1	5.4	1,915.5	24.6	980.0	10,316.5	31,803.0	1,024.3	726.3	2,639.0	215.7	15.7	19.0	133.3
30-Mar-22	108.6	105.7	5.7	1,932.2	25.0	997.7	10,367.5	32,893.0	1,044.8	738.0	2,651.0	221.9	15.9	19.4	136.2
31-Mar-22	102.7	98.5	5.7	1,944.5	24.9	992.4	10,375.0	32,107.0	1,029.8	748.8	2,650.0	226.4	16.0	19.3	132.1
1-Apr-22	102.8	97.9	5.8	1,925.7	24.6	989.6	10,353.5	33,223.0	1,013.8	735.0	2,599.0	228.4	16.0	19.2	130.9
4-Apr-22	106.0	101.8	5.8	1,931.7	24.5	989.2	10,469.0	33,245.0	1,039.3	750.5	2,562.0	230.6	16.0	19.4	134.3
5-Apr-22	105.2	100.7	6.1	1,923.6	24.4	973.3	10,455.0	33,312.0	1,084.3	759.8	2,534.0	231.3	16.0	19.5	134.0
6-Apr-22	100.3	95.4	6.1	1,925.0	24.4	954.6	10,305.0	33,467.0	1,086.0	756.5	2,549.0	227.6	15.9	19.4	132.6
7-Apr-22	100.1	95.5	6.4	1,934.3	24.5	959.5	10,311.5	33,698.0	1,073.3	757.8	2,574.0	226.2	15.8	19.7	131.4
8-Apr-22	102.2	97.7	6.4	1,947.5	24.8	979.2	10,323.5	33,855.0	1,110.0	768.8	2,620.0	231.7	15.8	20.3	131.1
11-Apr-22	98.3	93.9	6.7	1,941.5	24.8	978.0	10,200.5	32,483.0	1,145.5	764.5	2,616.0	236.6	15.6	20.2	133.5
12-Apr-22	104.2	100.2	6.8	1,974.1	25.6	977.1	10,342.5	32,488.0	1,166.8	776.3	2,583.0	233.6	15.7	20.2	137.5
13-Apr-22	108.1	103.8	7.1	1,979.0	25.7	990.8	10,299.0	32,981.0	1,178.0	783.5	2,583.0	225.1	15.8	20.1	141.5
14-Apr-22	110.8	106.4	7.4	1,971.2	25.5	991.0	10,315.0	33,175.0	1,157.3	790.3	2,583.0	223.6	16.2	20.0	140.7
15-Apr-22	...	...	...	1,978.2	25.6	992.9	...	...	...	...	...	...	...	...	...
18-Apr-22	111.9	107.6	8.0	1,986.6	26.0	1,020.6	...	...	1,189.0	813.3	2,525.0	223.5	16.6	20.2	143.3
19-Apr-22	106.6	102.1	7.3	1,957.5	25.3	990.1	10,304.5	33,768.0	1,176.3	804.0	2,525.0	221.3	16.1	19.7	138.3
20-Apr-22	106.3	102.2	7.1	1,953.4	25.2	990.5	10,223.0	33,505.0	1,169.5	815.8	2,536.0	218.8	16.1	19.6	138.9
21-Apr-22	108.0	103.8	7.1	1,940.6	24.5	971.2	10,285.0	33,911.0	1,143.5	799.3	2,540.0	228.2	16.2	19.8	137.9
22-Apr-22	106.2	102.1	6.7	1,931.6	24.1	931.4	10,110.0	33,107.0	1,149.5	793.0	2,506.0	227.3	16.2	19.2	135.9
25-Apr-22	102.2	98.5	6.8	1,897.7	23.7	922.0	9,769.0	32,636.0	1,153.0	800.3	2,432.0	220.8	16.3	18.9	135.4
26-Apr-22	104.6	101.7	7.0	1,903.3	23.5	919.3	9,860.0	33,076.0	1,164.5	803.3	2,557.0	221.4	16.8	18.9	135.7
27-Apr-22	105.0	102.0	7.3	1,887.6	23.4	920.4	9,856.0	33,300.0	1,154.0	815.5	2,572.0	216.0	16.7	18.9	140.7
28-Apr-22	107.3	105.4	6.9	1,888.7	23.1	919.9	9,697.0	32,977.0	1,141.3	816.0	2,601.0	217.9	16.8	19.2	147.7
29-Apr-22	107.1	104.7	7.2	1,896.9	22.8	939.3	9,769.5	31,771.0	1,105.8	818.3	2,597.0	222.6	17.1	19.2	145.6
2-May-22	107.6	105.2	7.5	1,866.0	22.5	941.6	...	...	1,098.0	813.0	2,632.0	216.4	16.8	18.9	150.8
3-May-22	105.0	102.4	8.0	1,869.9	22.6	966.8	9,410.0	30,975.0	1,092.8	800.8	2,615.0	218.2	16.6	18.6	150.1
4-May-22	110.1	107.8	8.4	1,868.6	22.4	996.0	9,473.5	30,638.0	1,123.3	798.5	2,588.0	221.2	16.7	18.6	154.8
5-May-22	110.9	108.3	8.8	1,876.6	22.4	982.6	9,489.5	30,114.0	1,177.0	803.8	2,519.0	218.4	16.7	18.8	148.8
6-May-22	112.4	109.8	8.0	1,883.8	22.4	962.2	9,414.5	30,076.0	1,170.5	792.3	2,500.0	211.6	16.6	19.2	143.6
9-May-22	105.9	103.1	7.0	1,861.1	21.9	960.6	9,237.5	28,185.0	1,164.3	784.5	2,483.0	206.3	16.5	18.7	142.9
10-May-22	102.5	99.8	7.4	1,845.0	21.6	971.6	9,228.5	28,414.0	1,175.0	786.5	2,473.0	204.0	16.6	18.5	142.9
11-May-22	107.5	105.7	7.6	1,852.3	21.6	1,000.0	9,340.0	27,806.0	1,200.5	802.3	2,517.0	220.1	16.7	18.6	143.6
12-May-22	107.5	106.1	7.7	1,825.6	20.8	948.0	9,090.0	27,810.0	1,270.0	813.5	2,461.0	215.0	16.9	18.6	145.5
13-May-22	111.6	110.5	7.7	1,811.8	21.1	946.3	9,159.0	27,262.0	1,282.0	794.5	2,483.0	212.9	17.2	19.2	145.2

... Data not available at this day

Sources: AFDB Statistics Department and Bloomberg

**Weekly Highlights on Price Movements of Selected Exchange Rates (currency per US\$)- Week ending 13 May 2022**

Region/Country	Currency Name	Currency Code	Rates				% change		
			Value at end of (13/05/2022)	Value at end of (06/05/2022)	Benchmark (24/02/2022)	Value at end of (13/05/2021)	Weekly	Benchmark (24/02/2022)	Annual
<b>Africa</b>									
Algeria	Algerian Dinar	DZD	146.3	145.4	141.1	133.4	-0.6	-3.5	-8.8
Angola	New Kwanza	AOA	409.2	406.2	497.3	652.9	-0.7	21.5	59.6
Botswana	Pula	BWP	12.3	12.2	11.6	10.7	-1.0	-5.3	-12.6
Burundi	Burundi Franc	BIF	2,042.1	2,047.8	2,004.4	1,971.9	0.3	-1.8	-3.4
Cabo Verde	Escudo	CVE	106.4	104.9	99.2	92.5	-1.4	-6.7	-13.0
Comoros	Comoros Franc	KMF	472.6	465.4	440.6	407.2	-1.5	-6.8	-13.8
Congo. Dem. Rep. of	Congolese Franc	CDF	1,995.4	1,994.0	1,996.1	1,986.1	-0.1	0.0	-0.5
Djibouti	Djibouti Franc	DJF	178.2	178.2	178.0	178.0	0.0	-0.1	-0.1
Egypt	Egyptian Pound	EGP	18.3	18.5	15.7	15.7	0.9	-14.3	-14.5
Ethiopia	Birr	ETB	51.7	51.7	50.9	42.7	0.1	-1.5	-17.4
Gambia. The	Gambian Dalasi	GMD	53.9	53.9	53.4	51.6	0.0	-0.9	-4.3
Ghana	New Cedi	GHS	7.6	7.5	6.7	5.8	-1.2	-11.6	-24.2
Guinea	Guinea Franc	GNF	8,817.3	8,836.7	8,982.0	9,864.2	0.2	1.9	11.9
Kenya	Kenyan Shilling	KES	116.2	116.0	113.9	107.2	-0.2	-2.0	-7.7
Liberia	Liberian Dollar	LRD	151.0	151.0	153.4	172.4	0.0	1.6	14.1
Libya	Libyan Dinar	LYD	4.8	4.8	4.6	4.5	-0.4	-4.5	-7.2
Madagascar	Ariary	MGA	4,032.9	4,033.2	3,985.7	3,752.0	0.0	-1.2	-7.0
Malawi	Kwacha	MWK	816.0	813.8	807.6	795.4	-0.3	-1.0	-2.5
Mauritania	Ouguiya	MRU	36.5	36.5	36.4	35.8	0.0	-0.2	-1.9
Mauritius	Mauritius Rupee	MUR	43.1	43.2	44.1	40.8	0.3	2.4	-5.3
Morocco	Dirham	MAD	10.1	10.0	9.5	8.9	-1.2	-6.2	-12.4
Mozambique	New Metical	MZN	63.9	63.9	63.9	58.9	0.0	0.0	-7.9
Nigeria	Naira	NGN	415.7	416.2	416.2	410.0	0.1	0.1	-1.4
Rwanda	Rwandan Franc	RWF	1,020.5	1,020.5	1,018.3	994.0	0.0	-0.2	-2.6
São Tomé & Príncipe	Dobra	STN	23.6	23.2	21.9	21.5	-1.7	-7.0	-8.9
Seychelles	Seychelles Rupee	SCR	13.8	13.6	14.2	15.6	-1.1	2.6	13.3
Sierra Leone	Leone	SLL	12,807.6	12,622.7	11,628.4	10,251.8	-1.4	-9.2	-20.0
Somalia	Somali Shilling	SOS	581.0	578.5	581.5	582.0	-0.4	0.1	0.2
South Africa	Rand	ZAR	16.2	16.0	15.5	14.1	-1.3	-4.4	-12.8
South Sudan	South Sudanese Pound	SSP	428.5	424.2	426.1	175.3	-1.0	-0.5	-59.1
Sudan	Sudanese Pound	SDG	447.1	445.4	443.1	379.9	-0.4	-0.9	-15.0
Tanzania	Tanzanian Shilling	TZS	2,325.4	2,324.5	2,314.7	2,317.4	0.0	-0.5	-0.3
Tunisia	Tunisian Dinar	TND	3.1	3.1	2.9	2.7	-0.9	-6.4	-11.8
Uganda	Uganda Shilling	UGX	3,608.3	3,558.5	3,528.7	3,540.0	-1.4	-2.2	-1.9
Zambia	Zambian Kwacha	ZMK	16,990.0	17,025.0	17,675.0	22,421.0	0.2	4.0	32.0
Zimbabwe	Zimbabwean Dollar	ZWD	173.3	166.0	115.9	84.6	-4.2	-33.1	-51.2
CFA zone Countries*	CFA Franc	XOF	630.1	620.6	587.4	543.0	-1.5	-6.8	-13.8
<b>Others</b>									
Europe	Euro	EUR	1.0	0.9	0.9	0.8	-1.5	-6.8	-13.8
United Kingdom	British Pound	GBP	0.8	0.8	0.7	0.7	-1.0	-8.4	-12.8
Japan	Yen	JPY	129.4	130.4	115.3	109.5	0.8	-10.8	-15.4
China	Chinese yuan	CNH	6.8	6.7	6.3	6.4	-1.3	-6.9	-5.1
Russia	Russian ruble	RUB	65.3	67.9	87.3	74.0	4.0	33.5	13.2

Sources: AfDB Statistics Department and Bloomberg