



AFRICAN DEVELOPMENT BANK GROUP

**Weekly Trends of Selected Commodity Prices and
Exchange Rates of African and Major Global Currencies¹:**

The situation as of Friday, September 9, 2022

Statistics Department (ECST)

¹ This briefing note has been prepared by Roza Mamuye Bora, Principal Statistician; Anouar Chaouch, Senior Statistician; and Robert Maate, Chief Statistician under the supervision of Louis Kouakou, Acting Director ECST.

Contents

	Page
Highlights	1
Data Annexes: Weekly Price Movements of Selected Commodities	2
Data Annexes: Weekly Price Movements of Selected Commodities Since 20 th June 2022	3
Data Annexes: Weekly Rates Movements of Selected Exchange Rates	4

Weekly Trends in Selected Commodity Prices and Exchange Rates of African and Major Global Currencies — Week Ending September 9, 2022

Summary

International prices for commodities such as fuel, agricultural products, and metals remain volatile due to global climatic, socio-economic, and political developments. In the week ending September 9, 2022, the prices of fuel and most agricultural commodities and fertilizers remained higher than in the same period of 2021. On a weekly basis, however, fuel recorded price drops while prices of metals and some agricultural products saw increases. During the week under review, most metals, selected agricultural commodities, and some fertilizers recorded lower prices compared to their February 24, 2022, levels; by contrast, energy prices remained higher, particularly for natural gas.

Energy

In the week ending September 9, 2022, the international prices of Brent crude, WTI crude oil, and natural gas decreased by 0.19%, 0.09%, and 8.99% respectively, compared to the preceding week. However, compared to the same period of 2021, the prices of Brent crude oil and WTI crude oil increased by 39.59% and 35.97% respectively, while the price of natural gas more than doubled during the same period to reach USD 8.00 per million btu.¹ In contrast to their levels on February 24, 2022, the prices of Brent crude oil and WTI crude oil increased by 6.74% and 4.19% in the review week, with natural gas recording the steepest rise at 67.95%.

Metals

International prices of all selected metals increased during the week ending September 9, 2022, compared to the previous week: nickel by 12.01%, platinum by 5.38%, silver by 4.53%, copper by 2.93% and gold by 0.27%. Compared to February 24, 2022, the prices of all selected metals fell in the review week: the highest price drop was for silver at 23.66%, followed by copper (20.35%), platinum (16.90%), gold (10.76%), and nickel (6.97%). On an annual basis, the prices of silver, copper, platinum, and gold declined by 21.57%, 16.31%, 9.98%, and 4.29% respectively, whereas the price of nickel rose by 13.89% over the same period.

Agricultural Commodities

In the week ending September 9, 2022, the international prices of wheat HRW, corn CBT, cotton and sugar increased by 5.87%, 4.41%, 1.58%, and 0.39% respectively compared to the previous week. In contrast, the prices of cocoa, coffee arabica, and rice fell by respective rates of 2.88%, 0.49%, and 0.35% on a weekly basis. On an annual basis, the prices of all the selected agricultural commodities, except cocoa and sugar, recorded increases. The highest annual price rise was for corn CBT (40.83%), followed by wheat HRW (33.13%), rice (32.37%), cotton (27.45%), and coffee arabica (25.14%). In contrast, the prices of cocoa and sugar fell by 13.01% and 2.51% respectively, on annual basis. Compared to their levels on February 24, 2022, selected agricultural commodities including wheat HRW, cocoa, and coffee arabica recorded lower prices on September 9, 2022. However, during the same period, prices were higher for rice, cotton, sugar and corn CBT (rice reaching almost 15%).

¹ Btu refers to British thermal units.

Fertilizers

As of September 9, 2022, the global prices of phosphoric rock, DAP, and TSP were higher than in the same period of 2021 by 112.5%, 17.33%, and 4.84% respectively. Compared to the previous week, during the review week the world price of TSP fell by 2.99%, while the prices of DAP and phosphoric rock remained constant. Compared to February 24, 2022, phosphoric rock registered a price increase of 65.85% in the week ending September 9, 2022, while TSP and DAP prices declined by 12.16% and 11.56% respectively.

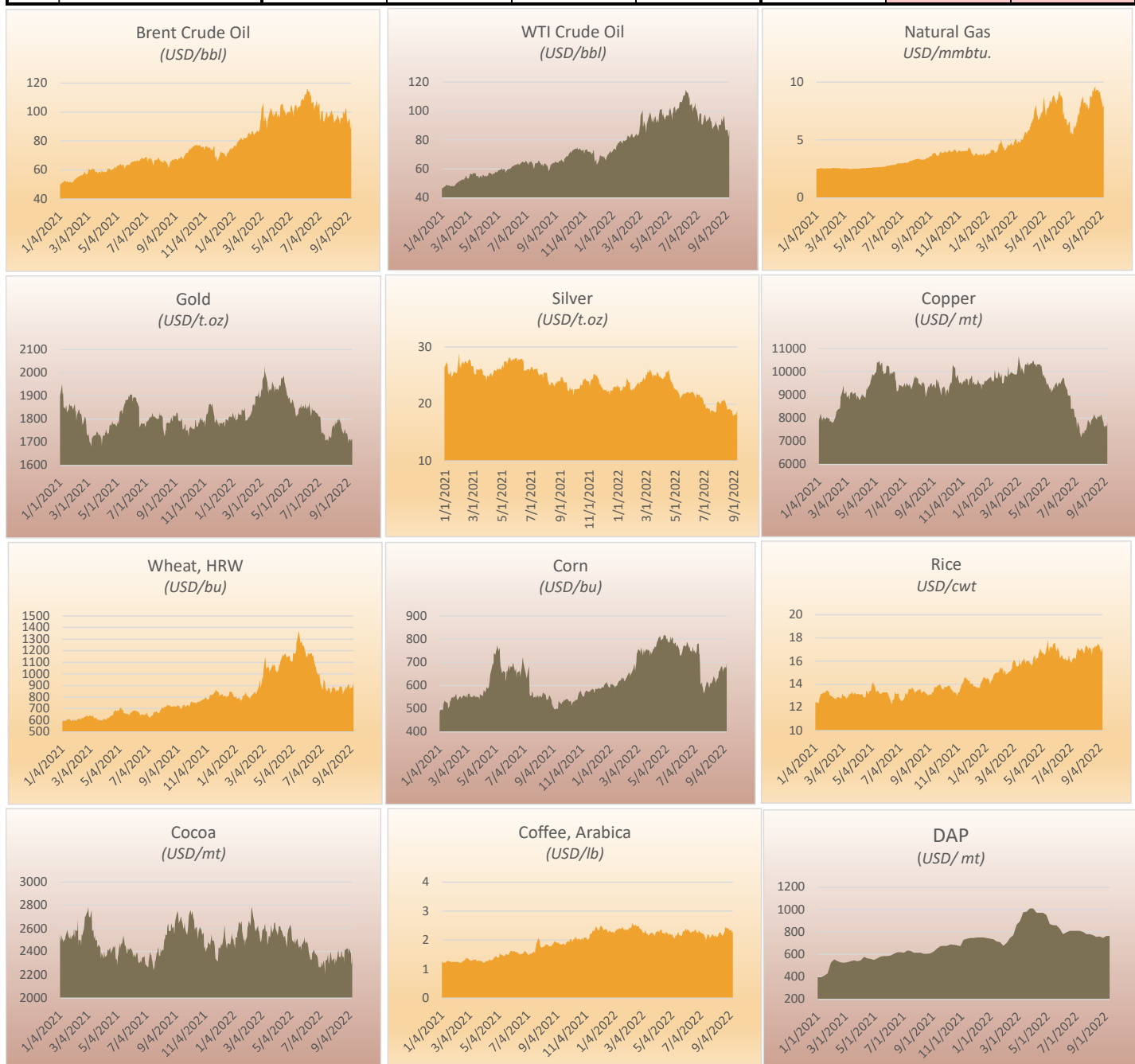
Exchange Rates

Major Currencies: During the week ending September 9, 2022, three major global currencies—specifically the Euro (EUR), British Pound (GBP) and Russian Ruble (RUB)—appreciated at varying rates against the US dollar (USD) on a weekly basis. The rates of appreciation were 0.84% (EUR), 0.67% (GBP) and 0.48%(RUB). In contrast, Japanese Yen (JPY) and Chinese Yuan (CNY) depreciated against the USD by 1.65% and 0.31% respectively. On a year-on-year basis, all the reviewed currencies except the RUB depreciated against the USD. The depreciation was at varying rates, specifically by 29.95% (JPY), 19.44% (GBP), 17.68% (EUR), and 7.58% (CNY). The Russian Ruble appreciated by 16.70% against the USD on a year-on-year basis. Compared to their rates on February 24, 2022, the Russian Ruble appreciated by 30.42% against the USD, while the other four major currencies depreciated by varying magnitudes, with the Japanese Yen registering the highest drop at 23.59%.

Currencies of African Countries: During the week ending September 9, 2022, exchange rates for African currencies fluctuated against the USD by varying degrees. Of the 37 African currencies with updated exchange rate movements, 16 currencies recorded appreciations on a weekly basis, while the rest depreciated against the USD. The highest weekly currency appreciation was recorded for the Mauritius Rupee (MUR) at 1.33%, while the largest depreciation was recorded for the Zimbabwean Dollar (ZWD) at 6.44%. On a year-on-year basis, six African countries recorded appreciation in their currencies against the USD, while the rest recorded depreciations. These six countries recorded annual appreciations ranging between 32.39% for Angola’s New Kwanza (AOA) and 1.26% for the Mozambique’s New Metical (MZN). During the week under review, 22 African currencies depreciated by more than 5.0% on an annual basis with the two steepest declines recorded by the currencies of Zimbabwe (ZWD) at 575.14% and South Sudan (SSP) at 266.23%.

Weekly Highlights on Price Movements of Selected Commodities - Week ending September 09, 2022

Commodity	Units	Prices				% change		
		Value at end of (09/09/2022)	Value at end of (09/02/2022)	Benchmark (02/24/2022)	Value at end of (09/09/2021)	Weekly	Benchmark (02/24/2022)	Annual
Energy								
Brent Crude Oil	USD/bbl.	92.84	93.02	86.98	66.51	-0.19	6.74	39.59
WTI Crude Oil	USD/bbl.	86.79	86.87	83.30	63.83	-0.09	4.19	35.97
Natural Gas	USD/mmbtu.	8.00	8.79	4.76	3.80	-8.99	67.95	110.70
Metals								
Gold	USD/t.oz	1,716.83	1,712.19	1,923.74	1,793.78	0.27	-10.76	-4.29
Silver	USD/t.oz	18.86	18.04	24.70	24.05	4.53	-23.66	-21.57
Platinum	USD/t.oz	884.19	839.05	1,064.05	982.18	5.38	-16.90	-9.98
Copper	USD/mt	7,856.50	7,633.00	9,864.00	9,387.50	2.93	-20.35	-16.31
Nickel	USD/mt	22,994.00	20,529.00	24,716.00	20,190.00	12.01	-6.97	13.89
Agriculture								
Wheat, HRW	USD/bu.	929.25	877.75	946.75	698.00	5.87	-1.85	33.13
Corn, CBT	USD/bu.	698.50	669.00	695.00	496.00	4.41	0.50	40.83
Cocoa	USD/mt	2,360.00	2,430.00	2,578.00	2,713.00	-2.88	-8.46	-13.01
Coffee, Arabica	USD/lb	2.32	2.33	2.39	1.85	-0.49	-3.28	25.14
Rice	USD/cwt	17.32	17.38	15.12	13.09	-0.35	14.55	32.37
Sugar	USD/lb	18.22	18.15	17.88	18.69	0.39	1.90	-2.51
Cotton	USD/lb	104.84	103.21	101.27	82.26	1.58	3.53	27.45
Fertilizers								
DAP	USD/mt	765.00	765.00	865.00	652.00	0.00	-11.56	17.33
TSP	USD/mt	650.00	670.00	740.00	620.00	-2.99	-12.16	4.84
Phosphoric Rock	USD/mt	340.00	340.00	205.00	160.00	0.00	65.85	112.50



Sources: AFDB Statistics Department and Bloomberg

Notes: bbl = barrel; mmbtu = million British thermal units; t.oz = troy oz; cwt= Hunderweight; bu= Bushel; MT = Metric Ton; lb= Pound

Daily Highlights on Price of Selected Commodities

	Brent Crude Oil	WTI Crude Oil	Natural Gas	Gold	Silver	Platinum	Copper	Nickel	Wheat, HRW	Corn, CBT	Cocoa	Coffee, Arabica	Rice	Sugar	Cotton
	<i>USD/bbl.</i>	<i>USD/bbl.</i>	<i>USD/mmbtu.</i>	<i>USD/t.oz</i>	<i>USD/t.oz</i>	<i>USD/t.oz</i>	<i>USD/mt</i>	<i>USD/mt</i>	<i>USD/bu.</i>	<i>USD/bu.</i>	<i>USD/mt</i>	<i>USD/lb</i>	<i>USD/cwt</i>	<i>USD/lb</i>	<i>USD/lb</i>
20-Jun-22	106.82	1,835.92	21.57	935.29	8,977.50	25,738.00
21-Jun-22	107.09	105.06	6.74	1,836.36	21.74	941.36	8,995.00	25,949.00	1,058.50	760.75	2,416.00	233.10	16.13	18.78	113.85
22-Jun-22	104.16	101.83	6.83	1,838.36	21.47	930.05	8,773.00	24,449.00	1,055.50	768.00	2,399.00	238.60	16.32	18.49	108.07
23-Jun-22	101.42	99.05	6.29	1,830.37	21.15	911.66	8,409.00	24,038.00	1,020.50	746.75	2,379.00	232.45	16.12	18.36	102.01
24-Jun-22	103.61	101.47	6.27	1,826.88	21.16	911.08	8,381.00	22,400.00	1,008.00	750.25	2,381.00	226.60	16.06	18.31	98.05
27-Jun-22	105.32	103.30	6.56	1,825.38	21.25	909.03	8,417.50	22,882.00	988.75	744.25	2,361.00	226.00	16.08	18.26	94.05
28-Jun-22	108.27	105.99	6.57	1,821.68	20.92	917.22	8,365.50	23,158.00	999.50	759.50	2,353.00	221.90	16.21	18.50	93.48
29-Jun-22	106.60	104.13	6.52	1,816.91	20.77	917.85	8,401.00	23,773.00	1,000.25	770.25	2,317.00	232.65	16.45	18.51	97.48
30-Jun-22	102.82	100.27	5.41	1,809.95	20.40	908.26	8,258.00	22,698.00	960.75	743.75	2,291.00	233.60	16.43	18.50	98.84
1-Jul-22	104.65	102.31	5.73	1,811.43	19.88	892.73	8,048.00	21,824.00	921.50	754.50	2,265.00	228.45	16.12	18.07	97.48
4-Jul-22	106.11	1,806.90	19.92	888.99	8,006.00	22,499.00
5-Jul-22	95.79	93.44	5.50	1,767.40	19.19	870.16	7,670.00	22,652.00	870.50	736.00	2,266.00	224.65	15.83	17.80	93.48
6-Jul-22	94.12	91.85	5.49	1,735.17	19.20	857.03	7,520.50	21,849.00	860.00	744.25	2,307.00	222.50	15.93	17.99	88.61
7-Jul-22	97.99	96.04	6.25	1,742.73	19.28	881.26	7,822.50	21,535.00	897.50	747.00	2,305.00	222.20	16.14	18.52	91.88
8-Jul-22	100.51	98.37	5.96	1,742.48	19.32	894.76	7,805.50	21,581.00	953.50	778.25	2,269.00	222.90	16.20	19.02	95.63
11-Jul-22	100.80	98.20	6.30	1,735.10	19.19	872.29	7,584.50	21,839.00	923.25	781.25	2,324.00	216.90	16.31	18.86	94.84
12-Jul-22	93.61	90.70	6.00	1,729.52	19.04	848.47	7,354.00	21,374.00	875.75	732.75	2,305.00	209.25	16.21	18.69	90.84
13-Jul-22	93.97	91.36	6.57	1,738.02	19.22	861.70	7,325.50	21,150.00	870.25	740.00	2,254.00	211.25	16.22	19.14	87.71
14-Jul-22	92.82	90.15	6.50	1,705.89	18.27	838.96	7,170.00	19,402.00	856.75	695.00	2,198.00	199.20	16.14	18.97	83.71
15-Jul-22	94.54	91.74	6.92	1,708.17	18.71	851.31	7,190.50	19,385.00	845.25	604.25	2,321.00	203.70	16.53	19.25	88.71
18-Jul-22	98.95	96.36	7.37	1,712.07	18.91	871.88	7,426.50	20,652.00	882.00	612.25	2,329.00	219.10	17.07	19.41	93.00
19-Jul-22	99.84	97.45	7.13	1,711.49	18.79	875.27	7,277.50	20,596.00	876.75	596.75	2,347.00	220.40	17.16	18.84	92.38
20-Jul-22	99.51	96.88	7.87	1,703.05	18.77	864.93	7,378.00	21,179.00	877.75	592.25	2,368.00	218.15	16.95	18.67	92.81
21-Jul-22	96.97	93.78	7.78	1,711.79	18.77	876.81	7,322.00	21,478.00	867.75	575.75	2,304.00	215.85	16.99	18.35	91.60
22-Jul-22	95.93	92.43	8.17	1,727.64	18.60	876.84	7,452.50	22,122.00	827.50	564.25	2,297.00	206.70	16.87	17.89	90.89
25-Jul-22	97.80	94.42	8.55	1,718.05	18.45	883.42	7,479.00	22,228.00	846.75	580.00	2,376.00	210.05	16.93	17.47	91.06
26-Jul-22	97.14	92.88	8.79	1,719.14	18.64	877.30	7,536.50	21,571.00	884.25	597.00	2,400.00	213.20	17.10	17.47	94.48
27-Jul-22	99.44	95.29	8.53	1,720.79	18.66	886.82	7,637.00	21,813.00	869.00	600.25	2,355.00	219.10	17.09	17.40	95.07
28-Jul-22	99.49	94.65	8.12	1,754.07	19.93	888.16	7,762.00	21,935.00	896.50	615.00	2,317.00	218.40	17.02	17.72	96.21
29-Jul-22	101.44	96.75	8.21	1,765.94	20.36	899.36	7,917.50	23,619.00	881.50	616.25	2,323.00	217.20	16.89	17.54	96.74
1-Aug-22	97.95	92.39	8.26	1,773.08	20.42	909.87	7,819.50	23,575.00	874.00	607.00	2,339.00	213.20	16.66	17.60	94.06
2-Aug-22	98.64	93.22	7.70	1,776.22	20.21	911.38	7,806.50	22,492.00	850.25	591.25	2,340.00	209.90	16.78	17.69	94.81
3-Aug-22	95.20	89.74	8.26	1,759.48	19.97	898.40	7,677.50	22,332.00	843.75	591.50	2,281.00	214.65	17.06	17.77	94.43
4-Aug-22	92.50	87.56	8.11	1,790.57	20.17	932.22	7,727.50	22,210.00	868.00	602.25	2,349.00	219.30	17.33	17.55	94.62
5-Aug-22	93.18	88.08	8.05	1,775.50	19.90	936.26	7,870.50	22,216.00	856.00	610.25	2,305.00	209.45	17.34	17.94	96.13
8-Aug-22	95.12	89.93	7.58	1,787.72	20.64	942.74	7,987.50	21,685.00	855.00	608.50	2,340.00	211.85	17.20	17.96	95.59
9-Aug-22	94.85	89.67	7.83	1,795.30	20.49	935.90	7,983.00	21,561.00	858.25	615.50	2,363.00	212.75	17.00	17.98	99.07
10-Aug-22	96.23	91.20	8.19	1,798.21	20.76	949.39	8,085.50	22,490.00	876.75	621.25	2,398.00	220.45	16.95	18.28	100.94
11-Aug-22	98.30	93.53	8.86	1,788.94	20.34	961.86	8,173.00	23,659.00	892.00	629.25	2,409.00	223.95	17.08	18.49	104.59
12-Aug-22	96.90	91.46	8.74	1,802.40	20.82	965.33	8,091.50	23,036.00	892.50	639.75	2,352.00	226.60	17.16	18.60	108.59
15-Aug-22	94.28	88.85	8.71	1,782.80	20.37	937.03	7,980.00	22,013.00	885.00	626.75	2,360.00	225.50	17.08	18.54	113.59
16-Aug-22	91.74	86.16	9.31	1,776.35	20.17	936.49	7,979.00	22,235.00	873.25	611.00	2,333.00	219.35	16.90	18.27	116.85
17-Aug-22	93.02	87.69	9.23	1,762.55	19.80	926.37	7,924.50	21,885.00	853.00	615.00	2,400.00	217.45	16.67	18.24	113.54
18-Aug-22	95.76	90.11	9.17	1,757.27	19.52	915.59	8,031.50	21,780.00	815.25	619.75	2,402.00	214.70	16.56	17.77	112.70
19-Aug-22	96.09	90.44	9.32	1,747.06	19.05	899.21	8,078.50	22,258.00	847.00	626.00	2,362.00	215.95	17.09	18.09	116.01
22-Aug-22	95.81	90.36	9.65	1,735.19	19.02	879.92	8,027.00	22,343.00	866.00	633.50	2,348.00	224.30	17.13	17.94	114.14
23-Aug-22	99.17	93.74	9.16	1,749.82	19.16	885.70	8,120.00	21,745.00	879.00	660.00	2,300.00	230.65	17.29	17.89	112.23
24-Aug-22	100.34	94.89	9.30	1,749.67	19.05	878.52	8,034.50	21,354.00	893.25	665.75	2,402.00	242.95	17.25	18.04	114.07
25-Aug-22	98.46	92.52	9.34	1,758.23	19.24	886.36	8,129.00	21,677.00	866.25	657.50	2,418.00	243.40	17.16	17.90	114.11
26-Aug-22	99.01	93.06	9.27	1,738.14	18.90	866.96	8,160.50	21,633.00	882.25	668.75	2,414.00	242.00	17.32	18.47	117.68
29-Aug-22	102.93	97.01	9.34	1,738.14	18.81	868.48	912.50	683.75	2,429.00	240.50	17.28	18.44	117.16
30-Aug-22	97.84	91.64	9.04	1,724.21	18.42	849.76	7,864.00	21,369.00	897.75	679.75	2,422.00	239.15	17.43	18.10	112.32
31-Aug-22	95.64	89.55	9.13	1,716.22	18.05	846.33	7,801.50	21,411.00	912.50	673.75	2,427.00	239.10	17.51	17.89	113.21
1-Sep-22	92.36	86.61	9.26	1,695.05	17.78	828.57	7,597.00	20,311.00	868.00	658.25	2,382.00	236.35	17.39	17.99	108.21
2-Sep-22	93.02	86.87	8.79	1,712.19	18.04	839.05	7,633.00	20,529.00	877.75	669.00	2,430.00	232.65	17.38	18.15	103.21
5-Sep-22	95.74	1,712.16	18.15	851.13	7,653.50	21,458.00
6-Sep-22	92.83	86.88	8.15	1,701.56	18.04	851.95	7,683.00	21,574.00	882.00	680.75	2,383.00	233.90	16.85	17.98	103.55
7-Sep-22	88.00	81.94	7.84	1,715.08	18.36	862.34	7,622.50	21,580.00	901.50	676.75	2,308.00	226.90	16.78	18.05	101.62
8-Sep-22	89.15	83.54	7.92	1,706.22	18.46	877.32	7,810.50	21,753.00	893.00	674.50	2,286.00	225.85	16.97	17.93	103.84
9-Sep-22	92.84	86.79	8.00	1,716.83	18.86	884.19	7,856.50	22,994.00	929.25	698.50	2,360.00	231.50	17.32	18.22	104.84

... Data not available at this day

Sources: AFD Statistics Department and Bloomberg

Weekly Highlights on Price Movements of Selected Exchange Rates (currency per USD)- Week ending September 9, 2022

Region/Country	Currency Name	Currency Code	Rates				% change		
			Value at end of (09/09/2022)	Value at end of (09/02/2022)	Benchmark (02/24/2022)	Value at end of (09/09/2021)	Weekly	Benchmark (02/24/2022)	Annual
Africa									
Algeria	Algerian Dinar	DZD	140.75	140.62	141.14	136.29	-0.09	0.28	-3.27
Angola	New Kwanza	AOA	430.40	428.56	497.34	636.59	-0.43	13.46	32.39
Botswana	Pula	BWP	12.94	12.91	11.64	10.94	-0.23	-11.17	-18.32
Burundi	Burundi Franc	BIF	2,043.25	2,056.63	2,004.43	1,985.77	0.65	-1.94	-2.89
Cabo Verde	Escudo	CVE	110.21	110.86	99.19	93.53	0.59	-11.11	-17.84
Comoros	Comoros Franc	KMF	489.32	493.47	440.61	415.83	0.84	-11.06	-17.67
Congo, Dem. Rep. of	Congolese Franc	CDF	2,001.85	2,005.09	1,996.09	1,973.04	0.16	-0.29	-1.46
Djibouti	Djibouti Franc	DJF	178.05	178.07	177.97	178.04	0.01	-0.04	0.00
Egypt	Egyptian Pound	EGP	19.33	19.23	15.70	15.71	-0.50	-23.10	-23.01
Ethiopia	Birr	ETB	52.80	52.63	50.93	45.77	-0.33	-3.68	-15.35
Gambia, The	Gambian Dalasi	GMD	54.88	55.39	53.43	51.95	0.93	-2.71	-5.64
Ghana	New Cedi	GHS	10.13	9.97	6.73	6.04	-1.57	-50.44	-67.59
Guinea	Guinea Franc	GNF	8,674.25	8,661.34	8,982.02	9,784.13	-0.15	3.43	11.34
Kenya	Kenyan Shilling	KES	120.37	120.19	113.85	109.77	-0.15	-5.73	-9.66
Liberia	Liberian Dollar	LRD	153.01	153.13	153.42	171.42	0.08	0.27	10.74
Libya	Libyan Dinar	LYD	4.95	4.93	4.60	4.52	-0.46	-7.76	-9.66
Madagascar	Ariary	MGA	4,158.07	4,137.57	3,985.72	3,917.83	-0.50	-4.32	-6.13
Malawi	Kwacha	MWK	1,025.49	1,026.24	807.63	811.68	0.07	-26.98	-26.34
Mauritania	Ouguiya	MRU	37.73	37.68	36.39	36.33	-0.13	-3.68	-3.85
Mauritius	Mauritius Rupee	MUR	44.52	45.12	44.10	42.55	1.33	-0.95	-4.63
Morocco	Dirham	MAD	10.75	10.58	9.49	8.91	-1.56	-13.23	-20.62
Mozambique	New Metical	MZN	63.84	63.94	63.88	63.95	0.15	0.07	0.17
Nigeria	Naira	NGN	435.49	429.15	416.21	411.29	-1.48	-4.63	-5.88
Rwanda	Rwandan Franc	RWF	1,036.32	1,038.60	1,018.25	1,005.77	0.22	-1.77	-3.04
São Tomé & Príncipe	Dobra	STN	24.66	24.69	21.92	20.89	0.12	-12.49	-18.05
Seychelles	Seychelles Rupee	SCR	13.99	13.48	14.16	13.54	-3.80	1.16	-3.36
Sierra Leone	Leone	SLL	14,326.05	14,267.87	11,628.36	10,365.83	-0.41	-23.20	-38.20
Somalia	Somali Shilling	SOS	568.35	568.35	581.50	578.42	0.00	2.26	1.74
South Africa	Rand	ZAR	17.30	17.30	15.47	14.17	0.05	-11.84	-22.06
South Sudan	South Sudanese Pound	SSP	641.56	640.10	426.14	175.18	-0.23	-50.55	-266.23
Sudan	Sudanese Pound	SDG	565.15	565.20	443.10	441.29	0.01	-27.54	-28.07
Tanzania	Tanzanian Shilling	TZS	2,329.09	2,328.11	2,314.69	2,317.48	-0.04	-0.62	-0.50
Tunisia	Tunisian Dinar	TND	3.20	3.21	2.91	2.79	0.21	-10.17	-14.87
Uganda	Uganda Shilling	UGX	3,815.69	3,812.53	3,528.73	3,541.60	-0.08	-8.13	-7.74
Zambia	Zambian Kwacha	ZMK	15,525.00	15,425.00	17,675.00	16,208.00	-0.65	12.16	4.21
Zimbabwe	Zimbabwean Dollar	ZWD	582.06	546.83	115.90	86.21	-6.44	-402.21	-575.14
CFA zone Countries*	CFA Franc	XOF	652.43	657.96	587.44	554.43	0.84	-11.06	-17.68
Selected Major Global Currencies									
Europe	Euro	EUR	0.99	1.00	0.90	0.85	0.84	-11.05	-17.68
United Kingdom	British Pound	GBP	0.86	0.87	0.75	0.72	0.67	-15.21	-19.44
Japan	Japanese Yen	JPY	142.55	140.23	115.34	109.70	-1.65	-23.59	-29.95
China	Chinese Yuan	CNY	6.94	6.92	6.33	6.45	-0.31	-9.64	-7.58
Russia	Russian Ruble	RUB	60.71	61.00	87.25	72.87	0.48	30.42	16.70

Sources: AfDB Statistics Department and Bloomberg