



AFRICAN DEVELOPMENT BANK GROUP

**Weekly Trends of Selected Commodity Prices and
Exchange Rates of African and Major Global Currencies¹:**

The situation as of Friday, June 07, 2024

Statistics Department (ECST)

¹ This briefing note has been prepared by Roza Mamuye Bora, Principal Statistician; Anouar Chaouch, Senior Statistician; and Robert Maate, Chief Statistician under the supervision of Louis Kouakou, Acting Director, ECST.

Contents

	Page
Highlights	1
Data Annexes: Weekly Price Movements of Selected Commodities	2
Data Annexes: Weekly Price Movements of Selected Commodities Since 1 st March 2024	3
Data Annexes: Weekly Movements in Exchange Rates of Selected Currencies	4

Weekly Trends in Selected Commodity Prices and Exchange Rates of African and Major Global Currencies — Week Ending June 7, 2024

Summary

In the week of June 7, 2024, prices of crude oil and metals fell compared to the preceding week, while prices of most agricultural commodities and fertilizer increased. On an annual basis, prices increased for crude oil, some metals, agricultural commodities and fertilizers, whereas prices were lower for few commodities including natural gas, nickel, platinum, sugar, wheat, corn, cotton and phosphoric rock. The Russian Ruble and the Japanese Yen appreciated against the USD, while the Euro and the British Pound depreciated, compared to the previous week. On an annual basis, the Russian Ruble, Japanese Yen and Chinese Yuan weakened against the USD, while the Euro and British Pound appreciated. Most of the reviewed African currencies depreciated against the USD compared to the previous week as well as the corresponding period of last year.

Energy

As of June 7, 2024, international prices for crude oil were lower compared to the preceding week, while price of natural gas was higher. Compared to the corresponding period of last year, prices were higher for crude oil, but lower for natural gas. On a week-on-week basis, prices of Brent crude oil and WTI crude oil fell by 1.84% and 1.90% respectively, whereas price of natural gas increased by 12.79%. In comparison to the same period of last year, prices of Brent crude oil and WTI crude oil increased by 9.04% and 9.72% respectively, while price of natural gas fell by 11.66%, to reach respective levels of USD 79.62, USD 75.53 per barrel and USD 2.92 per million btu¹.

Metals

During the week ending June 7, 2024, international prices of all reviewed metals fell on a week-on-week basis, however prices were still higher for some commodities, compared to their levels on June 7, 2023. Compared to the previous week, prices dropped for nickel by 8.52%, platinum by 6.80%, silver by 4.13%, copper by 2.76% and gold by 1.44%. In comparison to their levels on June 7, 2023, prices increased for some of the selected metals, specifically silver by 24.34%, gold by 18.10% and copper by 17.71%, whereas prices of nickel and platinum fell by 15.81% and 5.33% respectively.

Agricultural Commodities

Prices of most agricultural commodities increased on a weekly basis and prices were higher for some commodities compared to the same period of last year. In the week ending June 7, 2024, international prices of selected agricultural commodities increased compared to the preceding week, particularly cocoa by 6.45%, rubber TSR20 by 5.09%, sugar by 3.83%, rice by 2.83%, coffee arabica by 1.10% and corn CBT by 0.56%. In contrast, prices fell for wheat HRW by 6.07%, cotton by 2.96% and palm oil by 2.50%. Compared to the same period of last year, prices increased for some agricultural commodities, namely: cocoa by 220.11%, rubber TSR20 (37.09%), coffee arabica (21.25%) and palm oil (13.59%). In contrast, prices fell for some agricultural commodities including corn CBT (25.73%), sugar (15.25%), wheat HRW (11.50%), cotton (5.50%) and rice (0.76%).

¹ Btu refers to British thermal units.

Fertilizers

As of June 7, 2024, price of phosphoric rock was lower by 55.80%, while prices of TSP and DAP were higher by 26.09% and 16.62% respectively compared to prices in the same period of 2023. Compared to the previous week, prices of TSP and DAP increased by 1.16% and 0.76% respectively, while price of phosphoric rock remained the same.

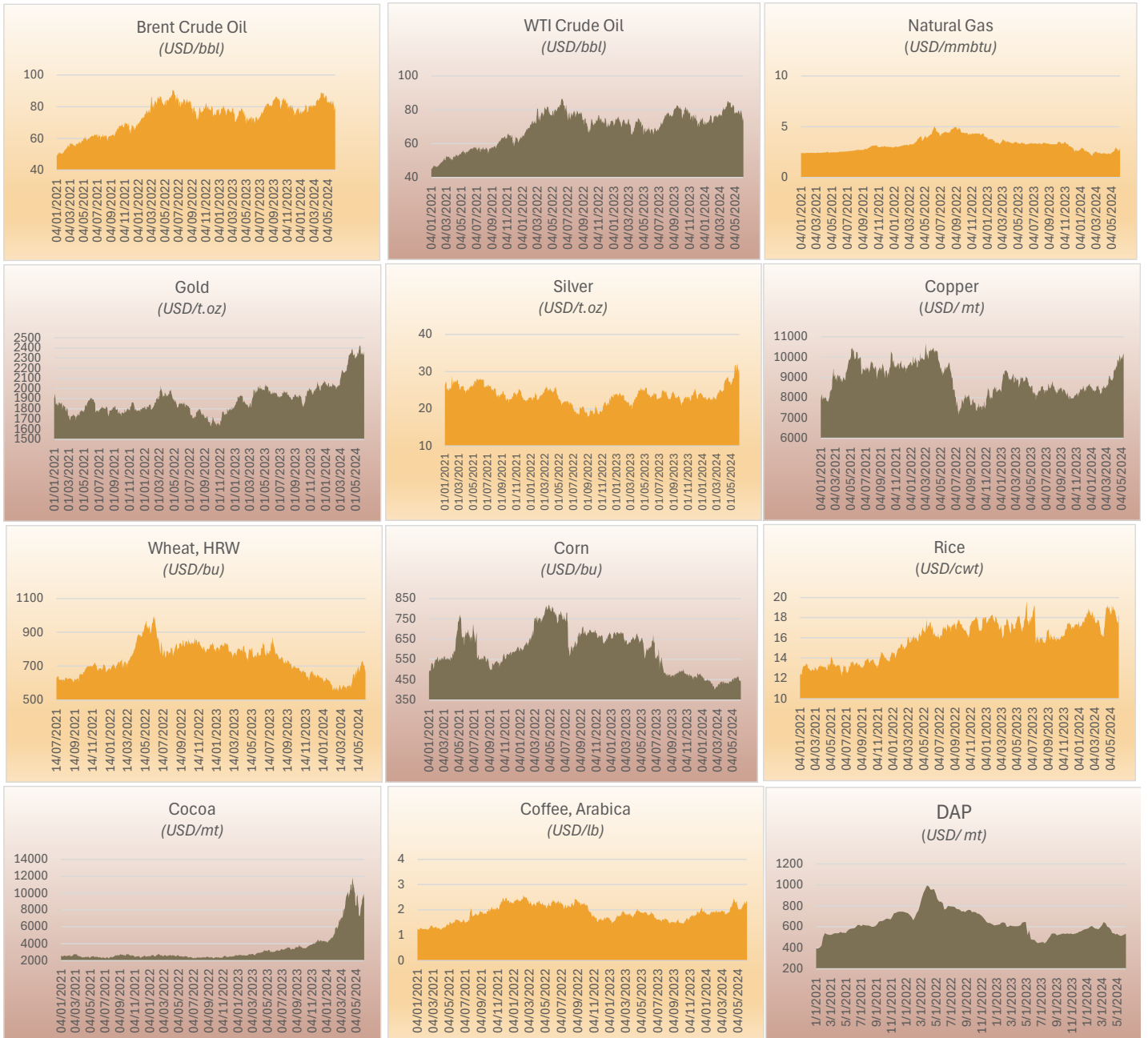
Exchange Rates

Major Currencies: During the week ending June 7, 2024, the Russian Ruble (RUB) and the Japanese Yen (JPY) appreciated against the US Dollar (USD), whereas the Euro (EUR) and the British Pound (GBP) depreciated. Exchange rate between the Chinese Yuan (CNY) the USD did not change during the week. The RUB and JPY appreciated against the USD by 1.46% and 0.32% respectively, compared to the previous week. The EUR and GBP depreciated against the USD by 0.39 and 0.05% respectively, during the same period. In comparison to the same period of 2023, most of the reviewed currencies depreciated against the USD at varying rates, specifically by 11.79% (JPY), 8.79% (RUB) and 1.58% (CNY), whereas the GBP and the EUR appreciated by 2.29% and 1.04% respectively.

Currencies of African Countries: During the week ending June 7, 2024, exchange rates for African currencies changed against the USD by varying degrees. Of the 37 African currencies reviewed, 12 currencies appreciated against the USD on a week on a week basis, while 22 currencies depreciated. Exchange rate of the Somali Shilling (SOS), South Sudanese Pound (SSP) and Sudanese Pound (SDG) with the USD did not change during the week. The highest weekly currency appreciation was recorded for the Seychelles Rupee (SCR) which appreciated by 1.47%, while the biggest depreciation was recorded for the Mauritius Rupee (MUR) at 2.20%. Compared to the same period of last year, 11 out of 36 African currencies, excluding Zimbabwe's new currency, recorded appreciations against the USD, with rates ranging between 6.95% for Kenya's Shilling (KES) and 0.16% for the Sudanese Pound (SDG). During the period, 25 African currencies depreciated against the USD, 12 of which depreciated by more than 10.0%.

Weekly Highlights on Price Movements of Selected Commodities - Week ending June 07th, 2024

Commodity	Units	Prices				% change		
		Value at end of (07/06/2024)	Value at end of (31/05/2024)	Benchmark (02/24/2022)	Value at end of (07/06/2023)	Weekly	Benchmark (02/24/2022)	Annual
Energy								
Brent Crude Oil	USD/bbl.	79.62	81.11	77.36	73.02	-1.84	2.92	9.04
WTI Crude Oil	USD/bbl.	75.53	76.99	72.81	68.84	-1.90	3.74	9.72
Natural Gas	USD/mmbtu.	2.92	2.59	3.26	3.30	12.79	-10.57	-11.66
Metals								
Gold	USD/t.oz	2 293.78	2 327.33	1 923.74	1 942.28	-1.44	19.24	18.10
Silver	USD/t.oz	29.15	30.41	24.70	23.45	-4.13	18.01	24.34
Platinum	USD/t.oz	967.81	1 038.45	1 064.05	1 022.33	-6.80	-9.04	-5.33
Copper	USD/mt	9 762.50	10 040.00	9 864.00	8 293.50	-2.76	-1.03	17.71
Nickel	USD/mt	18 031.00	19 710.00	24 716.00	21 417.00	-8.52	-27.05	-15.81
Agriculture								
Wheat, HRW	USD/bu.	665.75	708.75	728.25	752.25	-6.07	-8.58	-11.50
Corn, CBT	USD/bu.	448.75	446.25	695.00	604.25	0.56	-35.43	-25.73
Cocoa	USD/mt	9 933.00	9 331.00	2 578.00	3 103.00	6.45	285.30	220.11
Coffee, Arabica	USD/lb	2.25	2.22	2.39	1.85	1.10	-6.08	21.25
Rice	USD/cwt	18.17	17.67	15.12	18.31	2.83	20.17	-0.76
Sugar	USD/lb	19.00	18.30	15.84	22.42	3.83	19.95	-15.25
Palm Oil	USD/mt	842.86	864.46	1 685.90	742.01	-2.50	-50.01	13.59
Rubber, TSR20	USD/kg	1.84	1.75	1.83	1.34	5.09	0.44	37.09
Cotton	USD/lb	72.89	75.11	77.30	77.13	-2.96	-5.71	-5.50
Fertilizers								
DAP	USD/mt	531.50	527.50	815.00	455.75	0.76	-34.79	16.62
TSP	USD/mt	435.00	430.00	732.50	345.00	1.16	-40.61	26.09
Phosphoric Rock	USD/mt	152.50	152.50	172.50	345.00	0.00	-11.59	-55.80



Sources: AfDB Statistics Department and Bloomberg

Notes: bbl = barrel; mmbtu = million British thermal units; t.oz = troy oz; cwt = Hunderweight; bu = Bushel; MT = Metric Ton; lb = Pound

Daily Highlights on Price of Selected Commodities

	Brent Crude Oil	WTI Crude Oil	Natural Gas	Gold	Silver	Platinum	Copper	Nickel	Wheat, HRW	Corn, CBT	Cocoa	Coffee, Arabica	Rice	Sugar	Cotton	Palm Oil	Rubber, TSR20	
	USD/bbl.	USD/bbl.	USD/mmbtu.	USD/toz	USD/toz	USD/toz	USD/mt	USD/mt	USD/bu.	USD/bu.	USD/mt	USD/lb	USD/cwt	USD/lb	USD/lb	USD/mt	USD/kg	
1-Mar-24	81.2	77.6	2.5	2 082.9	23.1	888.3	8 503.5	17 662.0	555.5	412.3	6 826.0	1.9	18.2	20.9	83.0	848.1	1.6	
4-Mar-24	80.8	77.0	2.6	2 116.6	23.8	901.1	8 542.5	17 945.0	567.0	417.5	7 057.0	2.0	17.9	20.5	83.3	850.3	1.6	
5-Mar-24	80.1	76.2	2.6	2 131.0	23.8	885.0	8 491.5	17 759.0	557.8	413.5	6 970.0	2.0	17.7	20.6	83.2	855.1	1.6	
6-Mar-24	80.8	77.1	2.5	2 144.8	24.2	910.3	8 577.0	17 717.0	546.3	418.0	7 170.0	1.9	17.5	21.1	83.3	875.5	1.6	
7-Mar-24	81.0	77.2	2.5	2 158.3	24.4	918.3	8 640.5	17 983.0	561.0	426.0	7 054.0	2.0	17.4	21.0	84.3	881.0	1.6	
8-Mar-24	80.3	76.5	2.5	2 179.0	24.3	914.5	8 579.5	18 011.0	574.3	426.3	6 997.0	1.9	17.5	20.9	83.0	892.6	1.6	
11-Mar-24	80.6	76.7	2.4	2 179.7	24.5	940.2	8 653.0	18 377.0	587.8	428.3	7 329.0	1.9	17.4	21.7	83.3	898.4	1.6	
12-Mar-24	80.4	76.5	2.4	2 155.1	24.1	922.6	8 657.0	18 551.0	587.5	429.0	8 048.0	2.0	17.5	21.6	83.7	897.8	1.6	
13-Mar-24	82.2	78.3	2.4	2 174.6	25.0	941.7	8 927.0	18 346.0	579.5	426.5	8 034.0	1.9	17.6	21.7	84.0	905.9	1.6	
14-Mar-24	83.3	79.6	2.4	2 160.3	24.8	932.1	8 887.5	18 077.0	568.0	422.5	7 405.0	1.9	17.5	21.5	83.4	924.2	1.7	
15-Mar-24	83.5	79.6	2.4	2 155.9	25.2	938.9	9 072.0	18 074.0	559.8	436.8	8 018.0	1.8	17.8	21.8	83.7	919.5	1.7	
18-Mar-24	84.7	81.0	2.4	2 160.0	25.1	918.8	9 089.0	17 872.0	567.5	436.0	8 172.0	1.8	17.8	21.8	83.8	916.9	1.7	
19-Mar-24	85.1	81.4	2.4	2 156.9	24.9	898.8	8 976.5	17 395.0	575.5	439.5	8 027.0	1.8	17.7	21.4	84.0	907.1	1.7	
20-Mar-24	84.0	80.2	2.4	2 157.4	24.9	896.8	8 928.0	17 492.0	573.8	439.0	8 324.0	1.8	17.7	21.5	83.8	921.3	1.7	
21-Mar-24	83.9	80.1	2.4	2 180.9	24.8	911.2	8 950.5	17 541.0	575.5	440.8	8 559.0	1.9	17.5	21.8	83.9	922.8	1.7	
22-Mar-24	83.5	79.6	2.3	2 165.4	24.7	898.4	8 866.5	17 242.0	584.8	439.3	8 939.0	1.8	17.3	21.6	84.0	909.6	1.6	
25-Mar-24	84.6	80.8	2.3	2 174.8	24.7	906.2	8 873.0	16 937.0	585.5	437.8	9 649.0	1.9	17.0	21.7	84.0	921.1	1.6	
26-Mar-24	84.2	80.4	2.3	2 176.8	24.5	905.4	8 862.0	16 640.0	574.0	432.5	9 622.0	1.9	16.8	22.0	84.3	917.8	1.6	
27-Mar-24	84.0	80.2	2.3	2 190.5	24.6	899.8	8 849.5	16 620.0	574.0	426.8	9 843.0	1.9	16.6	21.9	83.3	899.0	1.6	
28-Mar-24	85.4	81.7	2.3	2 222.0	24.9	909.9	8 867.0	16 749.0	579.8	442.0	9 766.0	1.9	16.4	22.2	84.0	...	1.7	
29-Mar-24	2 229.9	25.0	911.3	915.3	...
1-Apr-24	85.6	82.0	2.4	2 238.2	25.0	902.4	571.0	435.5	10 120.0	1.9	16.3	22.4	84.4	934.0	1.6	
2-Apr-24	86.9	83.3	2.4	2 260.4	25.8	922.9	8 991.0	17 030.0	557.5	426.5	9 949.0	2.0	16.1	22.0	84.3	939.4	1.6	
3-Apr-24	87.5	83.8	2.4	2 294.0	26.9	934.1	9 262.5	17 339.0	572.0	431.8	9 524.0	2.0	16.5	21.8	84.1	962.8	1.6	
4-Apr-24	88.7	85.0	2.3	2 286.9	27.1	941.3	9 359.0	17 711.0	573.0	435.3	9 462.0	2.1	16.2	22.0	83.5	965.6	1.6	
5-Apr-24	89.1	85.2	2.3	2 329.8	27.5	930.6	9 329.5	17 804.0	579.5	434.3	9 795.0	2.1	16.2	21.6	82.7	961.4	1.6	
8-Apr-24	88.4	84.6	2.4	2 328.6	27.7	963.5	9 411.5	17 848.0	584.5	435.5	9 895.0	2.1	16.1	21.3	82.5	949.9	1.7	
9-Apr-24	87.7	83.7	2.4	2 345.1	27.9	970.0	9 417.5	18 219.0	574.3	431.3	10 204.0	2.1	16.6	21.1	81.4	951.5	1.7	
10-Apr-24	88.5	84.6	2.4	2 337.3	28.1	966.7	9 374.0	18 364.0	587.8	434.3	10 411.0	2.1	17.2	21.1	81.4	
11-Apr-24	87.9	83.8	2.3	2 349.9	28.1	975.2	9 342.0	17 811.0	578.5	428.8	10 373.0	2.2	16.9	20.5	80.7	...	1.7	
12-Apr-24	88.7	84.4	2.4	2 344.4	27.9	976.7	9 457.5	17 797.0	587.0	435.5	10 987.0	2.2	17.2	20.1	80.1	942.9	1.6	
15-Apr-24	88.4	84.2	2.3	2 357.3	28.7	970.0	9 576.0	17 846.0	580.8	431.5	11 001.0	2.3	18.3	19.8	80.6	921.9	1.6	
16-Apr-24	88.4	84.2	2.3	2 397.6	28.4	963.8	9 468.0	17 726.0	583.0	431.0	10 243.0	2.4	18.4	19.5	79.1	879.4	1.6	
17-Apr-24	85.9	81.6	2.3	2 372.5	28.3	943.7	9 582.5	18 238.0	569.0	430.3	10 340.0	2.5	18.8	19.3	78.5	867.9	1.6	
18-Apr-24	85.7	81.5	2.3	2 388.1	28.4	946.1	9 734.5	18 559.0	575.3	426.8	11 311.0	2.4	19.0	19.5	77.4	862.2	1.6	
19-Apr-24	85.8	81.6	2.3	2 391.9	28.7	935.5	9 876.0	19 326.0	583.0	433.5	11 878.0	2.4	19.0	19.5	77.6	847.8	1.6	
22-Apr-24	85.3	81.2	2.4	2 329.9	27.2	921.9	9 829.5	19 739.0	602.5	439.8	11 166.0	2.3	19.0	19.6	78.5	853.5	1.6	
23-Apr-24	86.6	82.6	2.4	2 330.4	27.3	913.6	9 706.5	19 006.0	614.3	443.0	10 584.0	2.2	19.2	19.7	78.1	852.1	1.6	
24-Apr-24	86.3	82.1	2.3	2 325.2	27.2	907.9	9 773.5	18 945.0	630.0	437.8	11 043.0	2.3	19.2	19.8	77.7	845.5	1.6	
25-Apr-24	86.9	82.8	2.3	2 328.9	27.3	912.2	9 865.0	19 157.0	640.5	441.0	10 988.0	2.3	19.1	19.2	77.6	828.7	1.6	
26-Apr-24	87.4	83.1	2.3	2 338.0	27.2	917.0	9 965.5	19 100.0	654.3	440.0	10 729.0	2.3	18.8	19.1	77.3	824.1	1.6	
29-Apr-24	86.4	82.0	2.4	2 342.9	27.4	952.1	10 135.5	19 148.0	650.5	439.3	9 983.0	2.3	19.1	19.8	78.3	828.9	1.6	
30-Apr-24	85.6	81.3	2.3	2 294.8	26.4	935.5	9 991.0	19 238.0	635.3	439.5	10 133.0	2.2	18.9	19.4	76.8	809.6	1.6	
1-May-24	82.8	78.4	2.3	2 303.8	26.5	949.1	9 895.5	18 879.0	625.0	443.3	9 183.0	2.2	19.0	19.2	75.2	
2-May-24	83.0	78.5	2.3	2 299.7	26.6	955.3	9 765.5	18 648.0	636.5	452.0	8 483.0	2.1	18.2	19.3	74.2	819.1	1.6	
3-May-24	82.5	77.8	2.4	2 301.7	26.6	957.4	9 910.0	19 237.0	650.3	447.0	8 505.0	2.1	18.7	19.3	76.0	820.3	1.6	
6-May-24	82.8	78.1	2.5	2 325.7	27.4	956.9	675.3	457.0	8 571.0	2.0	18.4	19.5	75.3	824.7	1.6	
7-May-24	82.7	78.1	2.5	2 312.5	27.3	979.9	10 029.5	19 256.0	664.0	453.8	9 593.0	2.0	18.3	20.0	75.8	835.4	1.6	
8-May-24	83.0	78.6	2.5	2 317.1	27.4	974.7	9 904.0	18 885.0	648.5	445.5	9 617.0	2.0	18.3	19.6	77.7	834.1	1.6	
9-May-24	83.3	78.8	2.5	2 329.8	28.1	983.2	9 904.5	19 033.0	651.8	442.8	9 678.0	2.0	18.7	19.6	76.5	827.3	1.6	
10-May-24	82.4	77.8	2.5	2 360.5	28.2	997.6	10 004.0	18 952.0	673.3	455.8	9 874.0	2.0	19.3	19.3	75.1	813.2	1.6	
13-May-24	82.9	78.6	2.6	2 336.8	28.2	1 002.3	10 185.5	19 230.0	700.0	458.5	8 149.0	2.0	18.7	18.6	75.6	826.4	1.7	
14-May-24	82.0	77.7	2.6	2 354.3	28.5	1 034.0	10 114.0	19 075.0	683.3	453.8	8 751.0	2.0	18.7	18.9	74.2	805.4	1.6	
15-May-24	82.3	78.2	2.6	2 383.8	29.4	1 060.3	10 219.0	19 489.0	675.0	462.5	9 066.0	2.0	19.1	18.7	74.3	807.8	1.7	
16-May-24	82.9	78.7	2.7	2 382.0	29.7	1 060.6	10 424.0	19 797.0	673.3	457.0	7 393.0	2.0	19.1	18.3	75.2	816.5	1.7	
17-May-24	83.6	79.6	2.8	2 415.2	31.5	1 085.4	10 668.0	21 080.0	661.8	452.5	7 348.0	2.1	18.8	18.1	75.0	831.0	1.7	
20-May-24	83.5	79.3	2.9	2 426.6	32.0	1 056.3	10 889.0	21 615.0	696.8	460.5	7 216.0	2.1	18.9	18.7	75.0	833.5	1.7	
21-May-24	82.7	78.7	2.8	2 422.9	31.8	1 053.2	10 859.0	21 304.0	701.5	458.0	7 394.0	2.2	18.6	18.6	75.3	816.9	1.7	
22-May-24	81.6	77.6	3.1	2 392.0	31.3	1 045.7	10 419.0	20 366.0	699.5	461.3	7 536.0	2.2	18.8	18.2	77.3	
23-May-24	81.1	76.9	2.9	2 341.0	30.3	1 023.9	10 417.5	20 084.0	710.8	464.0	8 109.0	2.2	18.5	18.3	78.6	818.9	1.7	
24-May-24	81.8	77.7	2.8	2 333.8	30.3	1 028.2	10 324.0	20 250.0	721.3	464.8	8 294.0	2.2	18.3	18.4	78.0	821.7	1.7	
27-May-24	82.9	2 355.0	31.8	1 055.8	822.7	1.7
28-May-24	83.9	79.8	2.8	2 356.7	32.0	1 061.9	10 501.5	20 467.0	731.3	462.5	8 780.0	2.3	18.1	18.7	79.1	842.1	1.8	
29-May-24	83.4	79.2	2.7	2 342.0	32.1	1 040.4	10 456.5	20 490.0	719.8	455.3	9 309.0	2.3	17.8	18.4	78.1	856.5	1.8	
30-May-24	81.9	77.9	2.6	2 347.9	31.4	1 032.3	10 135.0	20 063.0	709.5	448.8	9 257.0	2.3	17.8	18.2	76.5	847.2	1.8	
31-May-24	81.1	77.0	2.6	2 327.3	30.4	1 038.5	10 040.0	19 710.0	708.8	446.3	9 331.0	2.2	17.7	18.3	75.1	864.5	1.7	
3-Jun-24	78.4																	

Weekly Highlights on Price Movements of Selected Exchange Rates (currency per USD)- Week ending June 07th, 2024

Region/Country	Currency Name	Currency Code	Rates				% change		
			Value at end of (07/06/2024)	Value at end of (31/05/2024)	Benchmark (02/24/2022)	Value at end of (07/06/2023)	Weekly	Benchmark (02/24/2022)	Annual
Africa									
Algeria	Algerian Dinar	DZD	134.74	134.40	141.14	136.31	-0.25	4.54	1.15
Angola	New Kwanza	AOA	860.99	860.75	497.34	628.37	-0.03	-73.12	-37.02
Botswana	Pula	BWP	13.72	13.68	11.64	13.57	-0.30	-17.86	-1.11
Burundi	Burundi Franc	BIF	2 865.81	2 866.06	2 004.43	2 822.80	0.01	-42.97	-1.52
Cabo Verde	Escudo	CVE	102.23	102.13	99.19	103.21	-0.10	-3.07	0.95
Comoros	Comoros Franc	KMF	455.30	453.54	440.61	460.07	-0.39	-3.34	1.04
Congo. Dem. Rep. of	Congolese Franc	CDF	2 826.50	2 797.50	1 996.09	2 317.58	-1.04	-41.60	-21.96
Djibouti	Djibouti Franc	DJF	177.58	177.58	177.97	178.03	0.00	0.22	0.26
Egypt	Egyptian Pound	EGP	47.52	47.27	15.70	30.95	-0.53	-202.72	-53.54
Ethiopia	Birr	ETB	57.40	57.33	50.93	54.41	-0.13	-12.72	-5.51
Gambia. The	Gambian Dalasi	GMD	67.48	68.00	53.43	60.95	0.77	-26.31	-10.71
Ghana	New Cedi	GHS	14.90	14.77	6.73	11.22	-0.85	-121.39	-32.83
Guinea	Guinea Franc	GNF	8 603.39	8 598.93	8 982.02	8 587.32	-0.05	4.22	-0.19
Kenya	Kenyan Shilling	KES	129.51	130.43	113.85	139.18	0.71	-13.75	6.95
Liberia	Liberian Dollar	LRD	193.90	193.81	193.37	168.78	-0.05	-0.28	-14.89
Libya	Libyan Dinar	LYD	4.83	4.85	193.46	4.83	0.39	97.50	-0.19
Madagascar	Ariary	MGA	4 440.87	4 427.62	193.39	4 416.96	-0.30	-2 196.29	-0.54
Malawi	Kwacha	MWK	1 727.03	1 726.28	807.63	1 025.15	-0.04	-113.84	-68.47
Mauritania	Ouguiya	MRU	39.52	39.56	36.39	34.31	0.11	-8.60	-15.18
Mauritius	Mauritius Rupee	MUR	47.13	46.12	44.10	45.98	-2.20	-6.87	-2.52
Morocco	Dirham	MAD	9.92	9.96	9.49	10.17	0.36	-4.49	2.47
Mozambique	New Metical	MZN	63.67	63.84	63.88	63.98	0.26	0.33	0.49
Nigeria	Naira	NGN	1 473.24	1 479.70	416.21	466.79	0.44	-253.97	-215.61
Rwanda	Rwandan Franc	RWF	1 306.85	1 300.17	1 018.25	1 134.90	-0.51	-28.34	-15.15
São Tomé & Príncipe	Dobra	STN	22.88	22.85	21.92	23.09	-0.09	-4.36	0.94
Seychelles	Seychelles Rupee	SCR	14.23	14.44	14.16	13.66	1.47	-0.51	-4.13
Sierra Leone	Leone	SLL	22 619.53	22 505.10	11 628.36	22 595.63	-0.51	-94.52	-0.11
Somalia	Somali Shilling	SOS	571.50	571.50	581.50	569.00	0.00	1.72	-0.44
South Africa	Rand	ZAR	18.82	18.83	15.47	19.13	0.09	-21.66	1.64
South Sudan	South Sudanese Pound	SSP	1 549.30	1 549.30	426.14	952.36	0.00	-263.56	-62.68
Sudan	Sudanese Pound	SDG	598.80	598.80	443.10	599.75	0.00	-35.14	0.16
Tanzania	Tanzanian Shilling	TZS	2 609.37	2 599.06	2 314.69	2 372.90	-0.40	-12.73	-9.97
Tunisia	Tunisian Dinar	TND	3.12	3.12	2.91	3.11	-0.20	-7.34	-0.24
Uganda	Uganda Shilling	UGX	3 786.46	3 813.03	3 528.73	3 731.76	0.70	-7.30	-1.47
Zambia	Zambian Kwacha	ZMK	26 398.00	25 924.00	17 675.00	20 045.00	-1.83	-49.35	-31.69
Zimbabwe	Zimbabwe Gold	ZIG	13.45	13.32	115.90	3 094.99	-0.97	88.40	99.57
CFA zone Countries*	CFA Franc	XOF	607.07	604.72	587.44	613.43	-0.39	-3.34	1.04
Selected Major Global Currencies									
Europe	Euro	EUR	0.93	0.92	0.90	0.94	-0.39	-3.34	1.04
United Kingdom	British Pound	GBP	0.79	0.79	0.75	0.80	-0.05	-5.04	2.29
Japan	Japanese Yen	JPY	156.67	157.18	115.34	140.19	0.32	-35.83	-11.76
China	Chinese Yuan	CNY	7.26	7.26	6.33	7.15	0.00	-14.81	-1.58
Russia	Russian Ruble	RUB	89.05	90.37	87.25	81.85	1.46	-2.06	-8.79

Sources: AfDB Statistics Department and Bloomberg