



AFRICAN DEVELOPMENT BANK GROUP

**Weekly Highlights on Trends of Selected Commodity Prices and
Exchange Rates of Major Currencies¹:**
The situation as of Friday, July 1st, 2022

Statistics Department (ECST)

¹ This briefing note has been prepared by Roza Mamuye Bora, Principal Statistician; Anouar Chaouch, Senior Statistician; and Robert Maate, Chief Statistician under the supervision of Louis Kouakou, Acting Director ECST.

Contents

	Page
Highlights	1
Data Annexes: Weekly Price Movements of Selected Commodities	2
Data Annexes: Weekly Price Movements of Selected Commodities Since 1 st April 2022	3
Data Annexes: Weekly Rates Movements of Selected Exchange Rates	4

Weekly Trends in Selected Commodity Prices and Exchange Rates of African and Major Currencies — Week Ending July 1, 2022

Summary

International prices for commodities such as fuel, agricultural products, and metals remain volatile due to various global socio-economic and political developments. In the week ending July 1, 2022, the prices of most commodities were higher than their levels in the same period of 2021. However, prices of most selected metals for the week ending July 1, 2022 were generally lower than in the previous week and lower than their levels on February 24, 2022. The prices of most agricultural products remained steady for the week ending July 1, 2022 compared to the previous week, with the exception of wheat and cocoa, which fell by 8.49% and 4.87% respectively. The price of fertilizers also remained largely static in the review week compared to the previous week; however, compared to their levels on February 24, 2022, TSP and phosphoric rock recorded significant increases of 65.85% and 18.92% respectively, while the DAP price declined by 6.36%.

Energy

In the week ending July 1, 2022, the international prices of Brent crude and WTI crude oil increased by 2.32% and 0.75% respectively, compared to the preceding week, while the price of natural gas fell by 8.77%. Compared to the same period of 2021, the prices of Brent crude oil and WTI crude oil increased by 61.46% and 63.37% respectively, while the price of natural gas nearly doubled during the same period to reach USD 5.73 per million btu¹. In contrast to their levels on February 24, 2022, the prices of Brent crude oil, WTI crude oil, and natural gas increased by 25.87%, 26.83%, and 20.48% respectively in the review week.

Metals

International prices of selected metals fell during the week ending July 1, 2022, compared to the previous week: silver by 6.09%, copper by 3.97%, nickel by 2.57%, platinum by 2.01%, and gold by 0.85%. Similarly, compared to February 24, 2022, the prices of selected metals fell in the review week: the highest price drop was recorded for silver at 19.54%, followed by copper (18.41%), platinum (16.10%), nickel (11.7%), and gold (5.84%). On an annual basis, the prices of silver, platinum, and copper declined by 23.58%, 17.68%, and 13.67% respectively. In contrast, the prices of nickel and gold rose by 20.54% and 2.23% respectively, compared to one year previously.

Agricultural Commodities

In the week ending July 1, 2022, the international prices of wheat HRW, cocoa, and cotton fell by 8.49%, 4.87%, and 0.58% respectively compared to the previous week. In contrast, prices of sugar, coffee arabica, corn CBT, and rice increased by respective rates of 2.50%, 0.82%, 0.57%, and 0.40% on a weekly basis. On an annual basis, the prices of all selected agricultural commodities, except cocoa, recorded increases. The highest annual price rise was recorded for coffee arabica (46.44%), followed by wheat HRW (39.89%), cotton (23.60%), rice (22.54%), sugar (14.33%), and corn CBT (4.83%). The price of cocoa fell by 2.58% during the same period. Prices of selected agricultural commodities including corn CBT, rice, and sugar remained higher on July 1, 2022 than their levels on February 24, 2022, whereas price drops were recorded for cocoa, coffee arabica, wheat HRW, and cotton during the same period.

¹ Btu refers to British thermal units.

Fertilizers

As of July 1, 2022, global prices of phosphoric rock, TSP, and DAP were higher than in the same period of 2021 by 151.85%, 35.38%, and 31.71% respectively. On a weekly basis, world prices of phosphoric rock and DAP remained unchanged, while the price of TSP declined by 1.12%. Compared to their prices on February 24, 2022, phosphoric rock and TSP registered price increases of 65.85% and 18.92% respectively, while the DAP price declined by 6.36%.

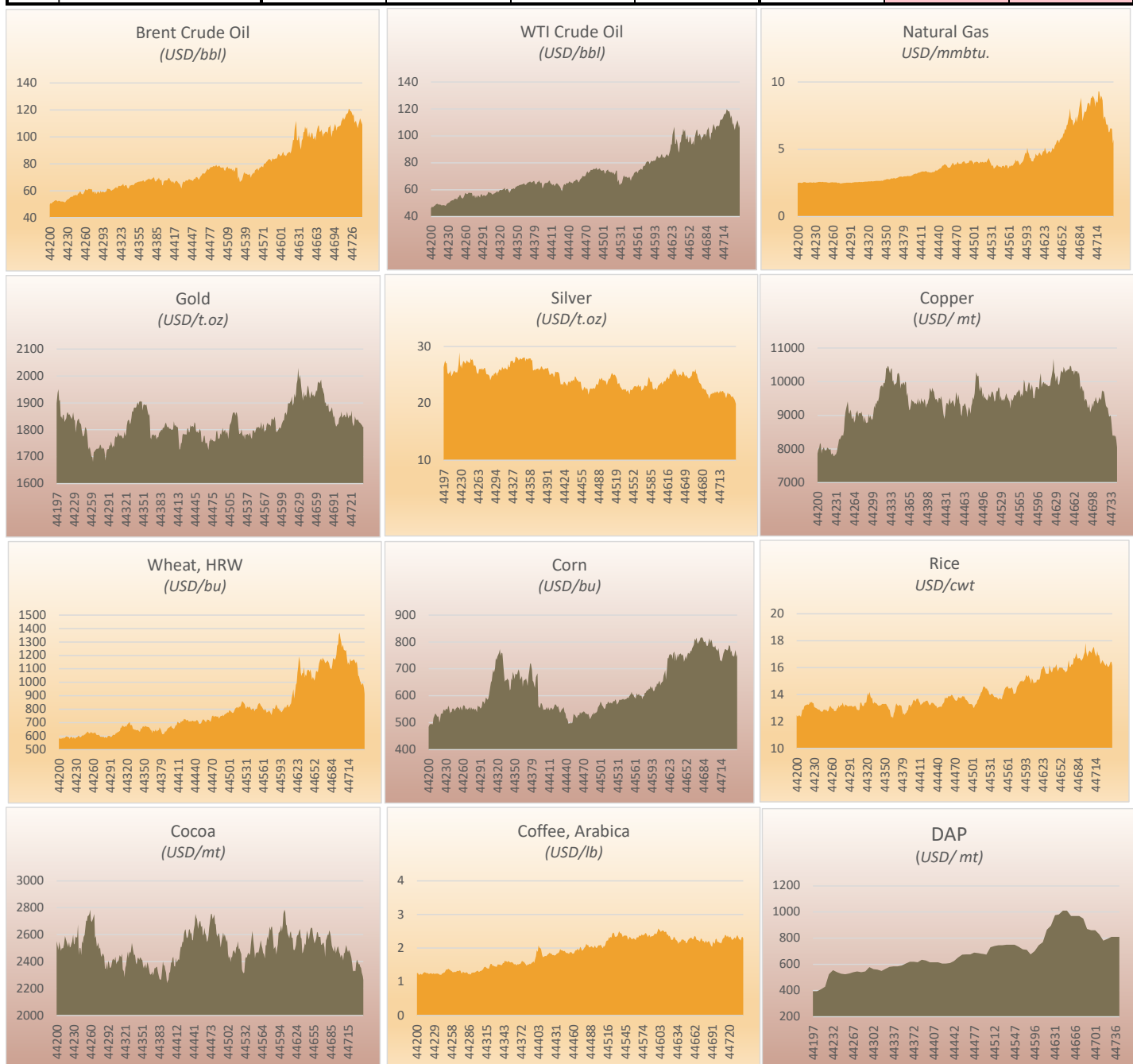
Exchange Rates

Major Currencies: During the week ending July 1, 2022, five major global currencies—specifically the Russian Ruble (RUB), British Pound (GBP), Euro (EUR), Chinese Yuan (CNH) and Japanese Yen (JPN)—depreciated slightly against the US dollar (USD) on a weekly basis. The rates of depreciations were 3.77% (RUB), 1.79% (GBP), 1.38% (EUR), 0.33% (CNH), and 0.08% (JPY). On a year-on-year basis, all the reviewed currencies except the RUB depreciated against the USD by varying rates, specifically 17.53% (JPY), 12.48% (GBP), 12.23% (EUR), and 3.45% (CNH). The Russian Ruble appreciated by 30.84% against the USD during the same period. Compared to their rates on February 24, 2022, the Russian Ruble rose by 55.46% against the USD, while the other four major currencies depreciated by varying magnitudes, with the Japanese Yen registering the highest drop at 14.74%.

African Currencies: During the week ending July 1, 2022, exchange rate trends for African currencies fluctuated against the USD by varying degrees. Of the 37 African currencies with updated exchange rate movements, 12 currencies recorded appreciations on a weekly basis, while the rest depreciated against the USD. The highest weekly currency appreciation was recorded for the Seychelles Rupee (SCR) at 2.97%, while the largest depreciation was recorded for the Zimbabwean dollar (ZWD) at 3.88%. On a year-on-year basis, seven African countries recorded appreciation in their currencies against the USD, while the rest recorded depreciations. These seven countries recorded annual appreciations ranging between 52.42% for Angola's New Kwanza (AOA) and 0.06% for the Djibouti Franc (DJF). During the week under review, 21 African currencies depreciated by more than 5.0% on an annual basis with the two steepest declines recorded by the currencies of Zimbabwe (ZWD) at 76.68% and South Sudan (SSP) at 64.53%.

Weekly Highlights on Price Movements of Selected Commodities - Week ending 01 July 2022

Commodity	Units	Prices				% change		
		Value at end of (01/07/2022)	Value at end of (24/06/2022)	Benchmark (24/02/2022)	Value at end of (01/07/2021)	Weekly	Benchmark (24/02/2022)	Annual
Energy								
Brent Crude Oil	USD/bbl.	111.63	109.10	88.69	69.14	2.32	25.87	61.46
WTI Crude Oil	USD/bbl.	108.43	107.62	85.49	66.37	0.75	26.83	63.37
Natural Gas	USD/mmbtu.	5.73	6.28	4.76	2.94	-8.77	20.48	94.83
Metals								
Gold	USD/t.oz	1,811.43	1,826.88	1,923.74	1,771.91	-0.85	-5.84	2.23
Silver	USD/t.oz	19.88	21.16	24.70	26.01	-6.09	-19.54	-23.58
Platinum	USD/t.oz	892.73	911.08	1,064.05	1,084.47	-2.01	-16.10	-17.68
Copper	USD/mt	8,048.00	8,381.00	9,864.00	9,322.00	-3.97	-18.41	-13.67
Nickel	USD/mt	21,824.00	22,400.00	24,716.00	18,105.00	-2.57	-11.70	20.54
Agriculture								
Wheat, HRW	USD/bu.	913.50	998.25	949.75	653.00	-8.49	-3.82	39.89
Corn, CBT	USD/bu.	754.50	750.25	695.00	719.75	0.57	8.56	4.83
Cocoa	USD/mt	2,265.00	2,381.00	2,578.00	2,325.00	-4.87	-12.14	-2.58
Coffee, Arabica	USD/lb	2.28	2.27	2.39	1.56	0.82	-4.55	46.44
Rice	USD/cwt	16.12	16.06	15.12	13.16	0.40	6.61	22.54
Sugar	USD/lb	18.83	18.37	17.75	16.47	2.50	6.08	14.33
Cotton	USD/lb	97.48	98.05	101.27	78.87	-0.58	-3.74	23.60
Fertilizers								
DAP	USD/mt	810.00	810.00	865.00	615.00	0.00	-6.36	31.71
TSP	USD/mt	880.00	890.00	740.00	650.00	-1.12	18.92	35.38
Phosphoric Rock	USD/mt	340.00	340.00	205.00	135.00	0.00	65.85	151.85



Sources: AFDB Statistics Department and Bloomberg

Notes: bbl = barrel; mmbtu = million British thermal units; t.oz = troy oz; cwt= Hunderweight; bu= Bushel; MT = Metric Ton; lb= Pound

Daily Highlights on Price of Selected Commodities

	Brent	WTI Crude	Natural Gas	Gold	Silver	Platinum	Copper	Nickel	Wheat,	Corn, CBT	Cocoa	Coffee,	Rice	Sugar	Cotton
	Crude Oil	Oil							HRW			Arabica			
	USD/bbl	USD/bbl	USD/mmbtu	USD/t.oz	USD/t.oz	USD/t.oz	USD/mt	USD/mt	USD/bu.	USD/bu.	USD/mt	USD/lb	USD/cwt	USD/lb	USD/lb
1-Apr-22	100.24	95.53	5.86	1,925.68	24.63	989.58	10,353.50	33,223.00	1,011.75	735.00	2,599.00	228.40	16.01	19.19	110.68
4-Apr-22	103.26	99.28	5.87	1,931.67	24.52	989.19	10,469.00	33,245.00	1,038.25	750.50	2,562.00	230.60	15.97	19.42	113.76
5-Apr-22	102.51	98.31	6.18	1,923.55	24.38	973.26	10,455.00	33,312.00	1,082.00	759.75	2,534.00	231.30	16.04	19.50	114.82
6-Apr-22	98.38	93.76	6.18	1,925.04	24.44	954.58	10,305.00	33,467.00	1,084.75	756.50	2,549.00	227.60	15.91	19.44	114.50
7-Apr-22	98.62	94.12	6.50	1,934.28	24.53	959.48	10,311.50	33,698.00	1,073.00	757.75	2,574.00	226.15	15.82	19.70	114.69
8-Apr-22	100.58	96.29	6.42	1,947.54	24.77	979.16	10,323.50	33,855.00	1,109.25	768.75	2,620.00	231.65	15.78	20.27	115.48
11-Apr-22	97.40	92.97	6.79	1,941.47	24.82	977.96	10,200.50	32,483.00	1,144.00	764.50	2,616.00	236.60	15.63	20.20	117.62
12-Apr-22	102.71	98.52	6.83	1,974.08	25.58	977.13	10,342.50	32,488.00	1,164.75	776.25	2,583.00	233.60	15.71	20.18	120.03
13-Apr-22	105.81	101.76	7.17	1,979.00	25.73	990.76	10,299.00	32,981.00	1,176.75	783.50	2,583.00	225.05	15.76	20.10	122.18
14-Apr-22	107.98	104.03	7.50	1,971.17	25.48	991.02	10,315.00	33,175.00	1,155.00	790.25	2,583.00	223.60	16.20	20.03	122.48
15-Apr-22	1,978.24	25.59	992.89
18-Apr-22	108.64	104.74	8.04	1,986.55	26.03	1,020.57	1,184.50	813.25	2,525.00	223.50	16.55	20.20	123.47
19-Apr-22	103.73	99.84	7.35	1,957.50	25.28	990.08	10,304.50	33,768.00	1,171.00	804.00	2,525.00	221.30	16.07	19.67	120.95
20-Apr-22	103.91	100.17	7.15	1,953.43	25.17	990.46	10,223.00	33,505.00	1,166.50	815.75	2,536.00	218.80	16.06	19.55	121.02
21-Apr-22	105.42	101.74	7.19	1,940.63	24.46	971.23	10,285.00	33,911.00	1,142.25	799.25	2,540.00	228.15	16.23	19.81	120.18
22-Apr-22	103.44	99.72	6.75	1,931.60	24.14	931.38	10,110.00	33,107.00	1,148.25	793.00	2,506.00	227.30	16.21	19.21	119.16
25-Apr-22	100.03	96.53	6.89	1,897.71	23.65	921.96	9,769.00	32,636.00	1,152.50	800.25	2,432.00	220.80	16.30	18.88	118.28
26-Apr-22	102.16	98.95	7.07	1,903.27	23.52	919.29	9,860.00	33,076.00	1,164.00	803.25	2,557.00	221.40	16.75	18.93	118.71
27-Apr-22	102.47	99.21	7.44	1,887.64	23.42	920.35	9,856.00	33,300.00	1,154.50	815.50	2,572.00	215.95	16.66	18.90	122.39
28-Apr-22	103.96	101.52	7.00	1,888.74	23.09	919.94	9,697.00	32,977.00	1,142.75	816.00	2,601.00	217.90	16.78	19.23	125.00
29-Apr-22	103.48	100.88	7.35	1,896.93	22.78	939.32	9,769.50	31,771.00	1,109.00	818.25	2,597.00	222.55	17.09	19.15	122.07
2-May-22	104.08	101.38	7.57	1,866.03	22.53	941.57	1,101.50	813.00	2,632.00	216.40	16.78	18.85	126.19
3-May-22	102.16	99.22	8.02	1,869.88	22.63	966.84	9,410.00	30,975.00	1,096.75	800.75	2,615.00	218.20	16.65	18.62	126.18
4-May-22	106.95	104.42	8.46	1,868.61	22.40	996.02	9,473.50	30,638.00	1,126.75	798.50	2,588.00	221.20	16.72	18.62	129.78
5-May-22	107.31	104.86	8.82	1,876.56	22.45	982.57	9,489.50	30,114.00	1,179.50	803.75	2,519.00	218.40	16.70	18.78	126.44
6-May-22	108.99	106.48	8.11	1,883.81	22.36	962.24	9,414.50	30,076.00	1,173.75	792.25	2,500.00	211.60	16.62	19.16	123.74
9-May-22	102.99	100.10	7.09	1,861.05	21.87	960.61	9,237.50	28,185.00	1,167.50	784.50	2,483.00	206.30	16.50	18.66	123.63
10-May-22	99.77	96.87	7.45	1,844.99	21.60	971.63	9,228.50	28,414.00	1,178.75	786.50	2,473.00	204.00	16.59	18.54	124.17
11-May-22	104.46	102.20	7.71	1,852.27	21.57	999.98	9,340.00	27,806.00	1,203.00	802.25	2,517.00	220.10	16.69	18.55	124.75
12-May-22	104.23	102.42	7.82	1,825.55	20.79	947.99	9,090.00	27,810.00	1,271.50	813.50	2,461.00	215.00	16.94	18.64	127.67
13-May-22	107.71	106.27	7.75	1,811.79	21.11	946.30	9,159.00	27,262.00	1,283.75	794.50	2,483.00	212.90	17.15	19.17	127.99
16-May-22	109.68	108.91	8.04	1,815.63	21.51	945.88	9,238.50	26,549.00	1,353.75	809.50	2,505.00	225.80	17.83	19.68	132.96
17-May-22	107.53	106.76	8.38	1,821.41	21.71	956.06	9,366.00	26,406.00	1,369.25	800.75	2,513.00	228.20	17.17	20.00	132.36
18-May-22	104.53	104.07	8.44	1,820.94	21.60	938.90	9,235.00	26,159.00	1,327.00	781.50	2,470.00	218.60	16.81	19.83	129.18
19-May-22	107.31	106.82	8.39	1,843.04	21.89	966.50	9,415.50	28,231.00	1,299.00	783.25	2,457.00	218.70	16.99	19.77	128.22
20-May-22	107.32	107.17	8.17	1,846.50	21.78	957.17	9,422.00	27,973.00	1,256.75	778.75	2,429.00	215.85	17.17	19.95	125.18
23-May-22	108.10	107.54	8.81	1,850.10	21.77	961.76	9,548.00	27,732.00	1,280.50	786.25	2,451.00	215.75	17.27	19.77	125.98
24-May-22	108.11	107.20	8.82	1,867.15	22.09	955.53	9,453.50	26,550.00	1,242.50	771.75	2,441.00	213.65	17.17	19.75	123.78
25-May-22	108.68	107.75	8.97	1,845.18	21.84	945.32	9,373.00	26,788.00	1,238.25	772.25	2,407.00	217.05	17.08	19.68	124.61
26-May-22	111.55	111.25	8.88	1,847.72	21.94	951.65	9,353.00	27,198.00	1,234.00	765.00	2,464.00	226.60	17.28	19.54	124.33
27-May-22	112.70	112.23	8.71	1,853.72	22.11	958.13	9,459.00	28,284.00	1,241.25	777.25	2,462.00	229.45	17.47	19.61	122.95
30-May-22	114.51	1,856.44	21.98	961.79	9,543.00	29,279.00
31-May-22	112.58	111.91	8.14	1,845.97	21.76	976.18	9,447.50	28,392.00	1,172.00	753.50	2,496.00	231.25	17.55	19.40	122.45
1-Jun-22	113.56	112.72	8.69	1,847.66	21.92	1,003.75	9,499.50	28,119.00	1,135.25	731.25	2,524.00	239.45	17.14	19.44	118.43
2-Jun-22	115.03	114.30	8.47	1,867.87	22.28	1,026.54	1,150.25	730.25	2,485.00	238.25	16.98	19.35	120.10
3-Jun-22	117.03	116.23	8.51	1,851.19	21.93	1,017.73	1,128.25	727.00	2,469.00	232.40	16.80	19.29	117.90
6-Jun-22	116.97	116.06	9.31	1,842.33	22.09	1,030.84	9,745.00	29,701.00	1,176.75	742.50	2,488.00	237.55	17.23	19.56	119.80
7-Jun-22	118.14	117.10	9.28	1,851.22	22.19	1,015.25	9,699.00	29,481.00	1,156.25	757.00	2,475.00	232.15	16.94	18.97	119.88
8-Jun-22	120.89	119.78	8.68	1,855.49	22.12	1,011.34	9,730.00	28,855.00	1,162.25	764.50	2,458.00	231.85	16.92	18.98	122.54
9-Jun-22	120.30	119.09	8.98	1,848.76	21.79	977.48	9,615.00	28,023.00	1,160.75	773.00	2,428.00	234.65	16.64	19.29	124.93
10-Jun-22	119.02	118.12	8.87	1,871.60	21.89	977.50	9,447.50	27,264.00	1,169.25	773.25	2,385.00	228.90	16.25	18.87	122.36
13-Jun-22	119.07	118.25	8.62	1,828.88	21.25	941.72	9,294.00	25,929.00	1,168.75	769.25	2,334.00	223.35	16.38	18.71	122.81
14-Jun-22	117.78	116.26	7.18	1,812.41	20.94	922.46	9,230.50	25,259.00	1,149.25	768.25	2,326.00	226.95	16.56	18.70	120.65
15-Jun-22	115.47	113.09	7.41	1,819.86	21.47	933.59	9,230.00	25,857.00	1,140.25	774.00	2,332.00	228.50	16.46	18.46	117.92
16-Jun-22	117.00	115.25	7.44	1,850.34	21.91	955.28	9,074.50	25,259.00	1,155.75	788.25	2,329.00	231.95	16.36	18.58	119.23
17-Jun-22	110.39	107.99	6.91	1,839.39	21.67	933.97	8,961.50	25,669.00	1,112.00	784.50	2,387.00	227.65	16.22	18.60	118.29
20-Jun-22	111.36	1,835.92	21.57	935.29	8,977.50	25,738.00
21-Jun-22	111.77	109.52	6.78	1,836.36	21.74	941.36	8,995.00	25,949.00	1,048.25	760.75	2,416.00	233.10	16.13	18.66	113.85
22-Jun-22	108.65	106.19	6.87	1,838.36	21.47	930.05	8,773.00	24,449.00	1,045.75	768.00	2,399.00	238.60	16.32	18.45	108.07
23-Jun-22	106.46	104.27	6.28	1,830.37	21.15	911.66	8,409.00	24,038.00	1,010.75	746.75	2,379.00	232.45	16.12	18.38	102.01
24-Jun-22	109.10	107.62	6.28	1,826.88	21.16	911.08	8,381.00	22,400.00	998.25	750.25	2,381.00	226.60	16.06	18.37	98.05
27-Jun-22	110.98	109.57	6.55	1,825.38	21.25	909.03	8,417.50	22,882.00	978.75	744.25	2,361.00	226.00	16.08	18.30	94.05
28-Jun-22	113.80	111.76	6.57	1,821.68	20.92	917.22	8,365.50	23,158.00	990.25	759.50	2,353.00	221.90	16.21	18.53	93.48
29-Jun-22	112.45	109.78	6.50	1,816.91	20.77	917.85	8,401.00	23,773.00	991.25	770.25	2,317.00	232.65	16.45	18.55	97.48
30-Jun-22	109.03	105.76	5.42	1,809.95	20.40	908.26	8,258.00	22,698.00	951.75	743.75	2,291.00	233.60	16.43	18.83	98.84
1-Jul-22	111.63	108.43	5.73	1,8											

Weekly Highlights on Price Movements of Selected Exchange Rates (currency per US\$)- Week ending 01 July 2022

Region/Country	Currency Name	Currency Code	Rates				% change		
			Value at end of (01/07/2022)	Value at end of (24/06/2022)	Benchmark (24/02/2022)	Value at end of (01/07/2021)	Weekly	Benchmark (24/02/2022)	Annual
Africa									
Algeria	Algerian Dinar	DZD	146.41	145.82	141.14	134.58	-0.40	-3.60	-8.08
Angola	New Kwanza	AOA	428.53	429.26	497.34	653.17	0.17	16.06	52.42
Botswana	Pula	BWP	12.47	12.20	11.64	10.94	-2.14	-6.66	-12.30
Burundi	Burundi Franc	BIF	2,042.28	2,044.58	2,004.43	1,977.29	0.11	-1.85	-3.18
Cabo Verde	Escudo	CVE	106.02	105.01	99.19	93.38	-0.96	-6.45	-11.93
Comoros	Comoros Franc	KMF	472.98	466.47	440.61	415.18	-1.38	-6.84	-12.22
Congo, Dem. Rep. of	Congolese Franc	CDF	1,995.14	1,994.13	1,996.09	1,976.66	-0.05	0.05	-0.93
Djibouti	Djibouti Franc	DJF	177.74	177.96	177.97	177.86	0.12	0.13	0.06
Egypt	Egyptian Pound	EGP	18.80	18.77	15.70	15.69	-0.16	-16.51	-16.54
Ethiopia	Birr	ETB	52.12	52.03	50.93	43.73	-0.18	-2.29	-16.10
Gambia, The	Gambian Dalasi	GMD	53.91	53.84	53.43	51.58	-0.11	-0.89	-4.32
Ghana	New Cedi	GHS	8.04	7.95	6.73	5.89	-1.09	-16.27	-26.71
Guinea	Guinea Franc	GNF	8,718.54	8,778.31	8,982.02	9,826.78	0.69	3.02	12.71
Kenya	Kenyan Shilling	KES	117.90	117.73	113.85	107.97	-0.14	-3.44	-8.42
Liberia	Liberian Dollar	LRD	152.21	151.99	153.42	171.45	-0.15	0.79	12.64
Libya	Libyan Dinar	LYD	4.82	4.81	4.60	4.51	-0.12	-4.67	-6.39
Madagascar	Ariary	MGA	4,063.16	4,042.64	3,985.72	3,894.18	-0.51	-1.91	-4.16
Malawi	Kwacha	MWK	1,024.50	1,018.92	807.63	806.44	-0.54	-21.17	-21.28
Mauritania	Ouguiya	MRU	36.44	36.38	36.39	35.75	-0.18	-0.15	-1.91
Mauritius	Mauritius Rupee	MUR	45.68	46.12	44.10	42.65	0.97	-3.46	-6.63
Morocco	Dirham	MAD	10.06	10.03	9.49	8.93	-0.38	-5.67	-11.22
Mozambique	New Metical	MZN	63.88	63.88	63.88	63.81	0.00	0.00	-0.11
Nigeria	Naira	NGN	421.36	417.79	416.21	410.42	-0.85	-1.22	-2.60
Rwanda	Rwandan Franc	RWF	1,023.16	1,024.20	1,018.25	997.98	0.10	-0.48	-2.46
São Tomé & Príncipe	Dobra	STN	23.49	23.42	21.92	20.75	-0.29	-6.67	-11.65
Seychelles	Seychelles Rupee	SCR	13.50	13.90	14.16	15.33	2.97	4.88	13.57
Sierra Leone	Leone	SLL	13,441.17	13,230.64	11,628.36	10,278.02	-1.57	-13.49	-23.53
Somalia	Somali Shilling	SOS	578.65	582.50	581.50	582.00	0.67	0.49	0.58
South Africa	Rand	ZAR	16.39	15.79	15.47	14.43	-3.68	-5.65	-11.99
South Sudan	South Sudanese Pound	SSP	492.82	487.35	426.14	174.82	-1.11	-13.53	-64.53
Sudan	Sudanese Pound	SDG	565.25	565.00	443.10	452.75	-0.04	-21.61	-19.90
Tanzania	Tanzanian Shilling	TZS	2,326.11	2,327.06	2,314.69	2,317.48	0.04	-0.49	-0.37
Tunisia	Tunisian Dinar	TND	3.11	3.10	2.91	2.78	-0.56	-6.59	-10.69
Uganda	Uganda Shilling	UGX	3,749.13	3,750.94	3,528.73	3,561.00	0.05	-5.88	-5.02
Zambia	Zambian Kwacha	ZMK	16,670.00	17,075.00	17,675.00	22,645.00	2.43	6.03	35.84
Zimbabwe	Zimbabwean Dollar	ZWD	366.27	352.06	115.90	85.42	-3.88	-68.36	-76.68
CFA zone Countries*	CFA Franc	XOF	630.64	621.96	587.44	553.56	-1.38	-6.85	-12.22
Others									
Europe	Euro	EUR	0.96	0.95	0.90	0.84	-1.38	-6.85	-12.23
United Kingdom	British Pound	GBP	0.83	0.82	0.75	0.73	-1.79	-9.87	-12.48
Japan	Yen	JPY	135.28	135.17	115.34	111.57	-0.08	-14.74	-17.53
China	Chinese yuan	CNH	6.71	6.68	6.33	6.47	-0.33	-5.65	-3.45
Russia	Russian ruble	RUB	56.13	54.01	87.25	73.44	-3.77	55.46	30.84

Sources: AfDB Statistics Department and Bloomberg