



AFRICAN DEVELOPMENT BANK GROUP

Weekly Trends of Selected Commodity Prices and Exchange Rates of African and Major Global Currencies¹:

The situation as of Friday, March 7, 2025

Statistics Department (ECST)

¹ This briefing note has been prepared by Bora Roza MAMUYE, Principal Statistician; Anouar CHAOUCH, Senior Statistician; and Robert MAATE, Chief Statistician. It has been cleared by Louis KOUAKOU, Division Manager ECST.1 and supervised by Babatunde Samson OMOTOSHO, Director ECST.

Contents

	Page
Highlights	1
Data Annexes: Weekly Price Movements of Selected Commodities	3
Data Annexes: Weekly Price Movements of Selected Commodities Since 1 st December 2024	4
Data Annexes: Weekly Movements in Exchange Rates of Selected Currencies	5

Weekly Trends in Selected Commodity Prices and Exchange Rates of African and Major Global Currencies — Week Ended March 7, 2025

Summary

In the week ended March 7, 2025, prices of natural gas, most selected metals, and some agricultural commodities increased compared to the previous week. Similarly, when compared to the corresponding period of last year, prices were higher for natural gas, most metals, and agricultural commodities. However, crude oil, nickel, cobalt, and a few agricultural commodities such as wheat, rice, sugar, and cotton recorded lower prices compared to the levels in the corresponding period of last year.

Regarding currency movements, the Euro, the British Pound, the Japanese Yen, and the Chinese Yuan appreciated against the United States Dollar (USD), while the Russian Ruble depreciated during the week under review, compared to the levels in the previous week. Relative to the corresponding period of last year, the British Pound, the Japanese Yen, and the Russian Ruble appreciated against the USD. Most of the reviewed African currencies appreciated against the USD when compared to their levels in the previous week, but depreciated when compared to the corresponding period of last year.

Energy

On March 7, 2025, the international price of crude oil fell compared to the preceding week and the corresponding period of last year, while natural gas recorded a price increase. Week-on-week, prices of Brent crude oil and WTI crude oil fell by 3.36% and 3.90%, respectively, while the price of natural gas increased by 14.74%. In comparison to the same period of last year, prices of Brent crude oil and WTI crude oil were lower by 8.04% and 7.12% respectively, while the price of natural gas was higher by 44.51%. Consequently, as of March 7, 2025, prices reached USD 70.36 and USD 67.04 per barrel for Brent crude oil and WTI crude oil, respectively, and USD 4.40 per million Btu¹ for natural gas.

Metals

International prices of most of the reviewed metals increased on March 7, 2025, compared to their levels in the preceding week as well as the corresponding period of last year. Compared to the previous week, prices increased for cobalt by 12.31%, nickel by 6.94%, silver by 4.45%, copper by 2.73%, platinum by 2.07%, and gold by 1.79%, while the price of manganese ore decreased by 0.61%. Similarly, in comparison to their levels on March 7, 2024, prices increased for most selected metals, specifically gold by 34.79%, silver by 33.47%, manganese ore by 31.91%, copper by 11.26%, and platinum by 5.53%, while prices of cobalt and nickel fell by 8.22% and 5.34%, respectively.

Agricultural Commodities

International prices of most agricultural commodities declined during the week under review compared to their levels in the previous week. However, prices were higher compared to the same period last year for most commodities. Prices of most selected agricultural commodities fell compared to their levels in the preceding week, particularly cocoa by 9.68%, wheat HRW by 1.44%, sugar by 1.13%, rubber TSR20 by 1.09%, and rice by 0.30%. In contrast, prices increased for some commodities including palm oil by 4.13%, coffee arabica by 2.94%, cotton by 1.26%, and corn CBT by 0.39%. Compared to the levels in the corresponding period of last year, prices increased for coffee arabica (96.72%), rubber TSR20 (25.52%), palm oil (25.27%), cocoa (15.41%), and corn CBT (6.87%). In contrast, prices fell for rice (24.05%), cotton (22.08%), sugar (12.01%), and wheat HRW (7.23 %).

¹ Btu refers to British thermal units.

Fertilizers

As of March 7, 2025, prices of DAP and TSP were higher by 1.23% and 0.49% respectively, when compared to the levels in the previous week. However, relative to the levels in the corresponding period of last year, price increased by 19.30% for TSP, but fell by 4.65% for DAP. Price of phosphoric rock remained unchanged at USD 152.50 per metric ton compared to the previous week as well as the same period of last year.

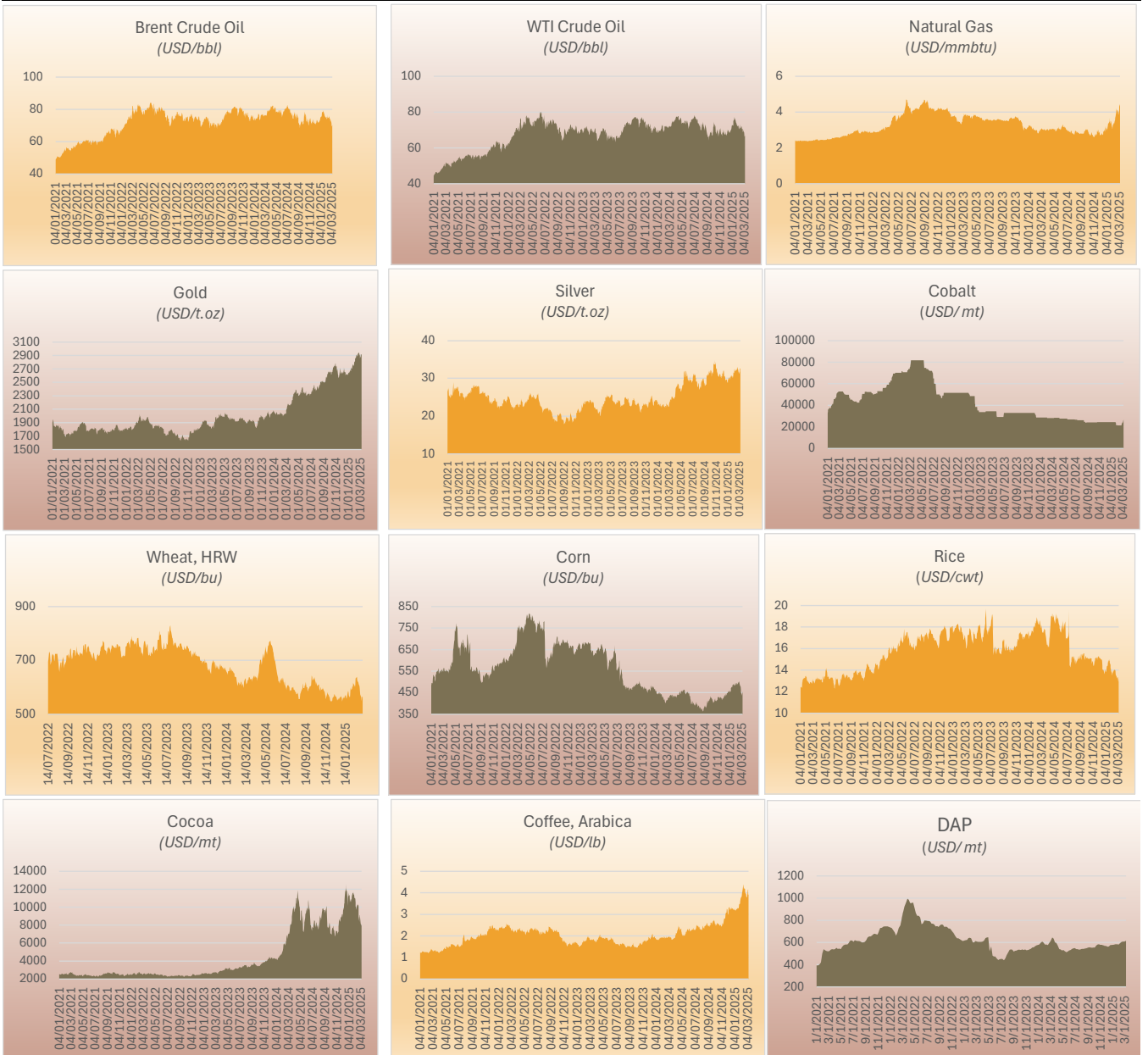
Exchange Rates

Major Currencies: During the week of March 7, 2025, four of the five major global currencies reviewed – the Euro (EUR), the British Pound (GBP), the Japanese Yen (JPY) and the Chinese Yuan (CNY)– appreciated against the USD, while the Russian Ruble (RUB) depreciated compared to the previous week. The week-on-week rates of appreciation against the USD were 4.23% for the EUR, 2.47% for the GBP, 1.92% for the JPY, and 0.65% for the CNY. The RUB depreciated against the USD by 0.61% during the week. In comparison to the corresponding period of 2024, most of the reviewed currencies appreciated against the USD as follows: GBP (0.90%), RUB (0.55%) and JPY (0.42%). However, during the same period, two currencies depreciated against the USD, the EUR by 0.86% and the CNY by 0.59%.

Currencies of African Countries: During the week of March 7, 2025, most African currencies appreciated against the USD with varying degrees on a weekly basis. Of the 37 African currencies reviewed, 21 currencies appreciated, while 13 currencies depreciated against the USD, compared to the levels in the previous week. The exchange rates of Angola’s New Kwanza (AOA), the Congolese (DRC), Franc (CDF), and the Ghana New Cedi (GHS) to the USD, remained unchanged during the week. The highest level of week-on-week currency appreciation was recorded for the CFA Franc (XOF) and Comoros Franc (KMF) at 4.12%, while the largest currency depreciation was recorded for the Tanzanian Shilling (TZS) at 1.03%. Compared to the corresponding period of last year, 10 out of 36 African currencies, excluding Zimbabwe’s new currency (ZIG), recorded appreciations against the USD, with rates of appreciation ranging between 9.67% for the Kenyan Shilling (KES) and 0.08% for the Botswana Pula (BWP). During the same period, 26 African currencies depreciated against the USD, 5 of which depreciated by more than 15.0%.

Weekly Highlights on Price Movements of Selected Commodities - Week ending March 07, 2025

Commodity	Units	Prices				% change		
		Value at end of (07/03/2025)	Value at end of (28/02/2025)	Benchmark (02/24/2022)	Value at end of (07/03/2024)	Weekly	Benchmark (02/24/2022)	Annual
Energy								
Brent Crude Oil	USD/bbl.	70.36	72.81	75.49	76.51	-3.36	-6.80	-8.04
WTI Crude Oil	USD/bbl.	67.04	69.76	70.74	72.18	-3.90	-5.23	-7.12
Natural Gas	USD/mmbtu.	4.40	3.83	3.11	3.04	14.74	41.40	44.51
Metals								
Gold	USD/t.oz	2 909.10	2 857.83	1 923.74	2 158.29	1.79	51.22	34.79
Silver	USD/t.oz	32.54	31.15	24.70	24.38	4.45	31.71	33.47
Platinum	USD/t.oz	969.08	949.43	1 064.05	918.32	2.07	-8.93	5.53
Copper	USD/mt	9 613.50	9 358.00	9 864.00	8 640.50	2.73	-2.54	11.26
Nickel	USD/mt	16 504.00	15 433.00	24 716.00	17 983.00	6.94	-33.23	-8.22
Manganese Ore	USD/mt	6.49	6.53	7.19	4.92	-0.61	-9.74	31.91
Cobalt	USD/mt	26 730.00	23 800.00	73 722.00	28 239.00	12.31	-63.74	-5.34
Agriculture								
Wheat, HRW	USD/bu.	564.75	573.00	821.50	608.75	-1.44	-31.25	-7.23
Corn, CBT	USD/bu.	455.25	453.50	695.00	426.00	0.39	-34.50	6.87
Cocoa	USD/mt	8 141.00	9 014.00	2 578.00	7 054.00	-9.68	215.79	15.41
Coffee, Arabica	USD/lb	3.90	3.79	2.39	1.98	2.94	63.02	96.72
Rice	USD/cwt	13.25	13.29	15.12	17.44	-0.30	-12.40	-24.05
Sugar	USD/lb	18.31	18.52	16.21	20.81	-1.13	12.95	-12.01
Palm Oil	USD/mt	1 103.56	1 059.84	1 685.90	880.98	4.13	-34.54	25.27
Rubber, TSR20	USD/kg	2.00	2.02	1.83	1.59	-1.09	9.19	25.52
Cotton	USD/lb	66.07	65.25	77.30	84.79	1.26	-14.53	-22.08
Fertilizers								
DAP	USD/mt	615.00	607.50	815.00	645.00	1.23	-24.54	-4.65
TSP	USD/mt	510.00	507.50	732.50	427.50	0.49	-30.38	19.30
Phosphoric Rock	USD/mt	152.50	152.50	172.50	152.50	0.00	-11.59	0.00



Sources: ARDB Statistics Department and Bloomberg

Notes: bbl = barrel; mmbtu = million British thermal units; t.oz = troy oz; cwt= Hunderweight; bu= Bushel; MT = Metric Ton; lb= Pound

Daily Highlights on Price of Selected Commodities

	Brent Crude Oil	WTI Crude Oil	Natural Gas	Gold	Silver	Platinum	Copper	Nickel	Wheat, HRW	Corn, CBT	Cocoa	Coffee, Arabica	Rice	Sugar	Cotton	Palm Oil	Rubber, TSR20	Manganese Ore	Cobalt	
	USD/bbl.	USD/bbl.	USD/mmbtu.	USD/t.oz	USD/t.oz	USD/t.oz	USD/mt	USD/mt	USD/bu.	USD/bu.	USD/mt	USD/lb	USD/cwt	USD/lb	USD/lb	USD/mt	USD/kg	USD/mt	USD/mt	
2-Dec-24	71.1	67.4	2.8	2 638.9	30.4	947.5	8 992.5	15 693.0	547.8	424.5	9 197.0	3.0	15.3	19.8	72.7	1 169.7	2.0	5.2	24 300.0	
3-Dec-24	72.7	69.0	2.7	2 647.1	31.0	956.4	9 111.5	16 015.0	549.5	423.3	8 833.0	3.0	15.3	20.0	72.6	1 195.3	2.0	5.2	24 300.0	
4-Dec-24	71.5	67.7	2.7	2 651.5	31.4	946.7	9 083.0	16 107.0	550.0	422.0	9 196.0	3.1	15.1	19.9	72.5	1 186.8	2.0	5.2	24 300.0	
5-Dec-24	71.2	67.5	2.7	2 628.1	31.1	937.5	9 074.5	15 974.0	560.3	426.5	9 648.0	3.2	15.2	19.9	72.4	1 204.2	2.0	5.2	24 300.0	
6-Dec-24	70.4	66.7	2.7	2 633.4	31.0	931.6	9 122.5	16 047.0	561.5	430.8	9 767.0	3.3	15.1	20.3	71.4	1 206.7	2.1	5.2	24 300.0	
9-Dec-24	71.4	67.8	2.7	2 664.6	32.0	947.9	9 232.0	15 996.0	566.3	434.0	9 977.0	3.3	15.1	20.0	71.2	1 199.0	2.1	5.2	24 300.0	
10-Dec-24	71.5	67.9	2.7	2 694.4	32.1	943.3	9 216.5	15 715.0	573.0	440.5	10 387.0	3.4	15.1	19.6	70.7	1 166.7	2.0	5.2	24 300.0	
11-Dec-24	72.6	69.3	2.8	2 718.1	32.0	939.5	9 192.0	15 858.0	574.8	438.0	10 458.0	3.2	15.0	19.8	71.3	1 153.1	2.0	5.2	24 300.0	
12-Dec-24	72.6	69.1	2.8	2 686.4	31.1	931.9	9 091.5	16 168.0	570.3	431.8	10 702.0	3.2	15.0	19.5	71.3	1 162.7	2.0	5.2	24 300.0	
13-Dec-24	73.5	70.1	2.8	2 648.2	30.6	926.9	9 052.5	15 862.0	565.3	430.0	11 181.0	3.2	15.0	19.3	70.4	1 155.1	2.0	5.2	24 300.0	
16-Dec-24	72.9	69.6	2.7	2 652.2	30.6	940.9	9 062.5	15 708.0	566.8	445.0	11 821.0	3.3	15.0	19.2	70.2	1 100.6	2.0	5.2	24 300.0	
17-Dec-24	72.3	69.0	2.7	2 646.1	30.5	940.1	8 989.5	15 503.0	560.3	443.5	11 765.0	3.3	15.0	18.5	69.8	1 094.2	2.0	5.2	24 300.0	
18-Dec-24	72.4	69.2	2.7	2 636.1	30.2	933.9	9 028.5	15 508.0	556.8	437.3	12 565.0	3.3	14.8	18.3	69.2	1 051.2	1.9	5.2	24 300.0	
19-Dec-24	71.8	68.6	2.9	2 592.7	28.9	921.5	8 883.0	15 113.0	551.0	440.8	12 107.0	3.2	14.4	18.1	69.0	1 055.1	1.9	5.2	24 300.0	
20-Dec-24	71.9	68.7	2.9	2 622.9	29.5	927.8	8 941.0	15 356.0	552.5	446.3	11 954.0	3.3	14.1	18.1	69.2	1 056.6	1.9	5.2	24 300.0	
23-Dec-24	71.7	68.5	2.9	2 611.3	29.6	941.3	8 912.0	15 292.0	559.0	447.8	11 746.0	3.3	14.0	18.1	70.5	1 091.3	1.9	5.2	24 300.0	
24-Dec-24	72.4	69.3	3.0	2 617.1	29.7	945.9	8 950.5	15 477.0	551.8	448.5	11 852.0	3.3	14.1	18.1	69.9	1 091.4	1.9	5.2	24 300.0	
25-Dec-24	2 616.9	29.7	946.4	5.2	...
26-Dec-24	72.1	68.9	2.9	2 629.4	29.7	938.7	559.5	453.8	11 027.0	3.2	13.9	17.9	69.9	1 096.4	1.9	5.2	...	
27-Dec-24	72.9	69.8	3.0	2 621.4	29.4	925.5	8 982.0	15 311.0	562.8	454.0	10 124.0	3.2	13.8	17.9	70.0	1 113.2	1.9	5.2	24 300.0	
30-Dec-24	73.2	70.2	3.2	2 605.3	29.0	911.0	8 910.0	15 415.0	564.5	452.3	11 507.0	3.2	13.6	17.8	69.6	1 103.5	2.0	5.2	24 300.0	
31-Dec-24	73.9	70.9	3.1	2 624.4	28.8	908.4	8 768.0	15 328.0	567.8	458.5	11 675.0	3.2	14.0	17.9	69.5	1 086.7	...	5.1	24 300.0	
1-Jan-25	2 624.5	28.9	907.6
2-Jan-25	75.0	72.0	3.1	2 656.6	29.5	923.1	8 802.5	15 078.0	560.8	459.5	11 137.0	3.3	14.0	18.4	69.7	1 047.3	1.9	5.1	24 300.0	
3-Jan-25	75.5	72.7	2.9	2 640.2	29.6	939.5	8 876.5	15 111.0	547.3	450.8	11 238.0	3.2	13.8	18.3	68.8	1 049.1	1.9	5.1	24 300.0	
6-Jan-25	75.2	72.4	3.1	2 636.8	30.1	933.5	9 003.0	15 182.0	561.8	457.8	11 377.0	3.2	13.9	18.0	69.8	1 039.7	1.9	5.1	24 300.0	
7-Jan-25	75.9	73.0	3.0	2 652.6	30.1	954.2	9 003.0	15 398.0	564.5	458.0	11 210.0	3.2	13.8	18.1	69.7	1 049.9	1.8	5.1	24 300.0	
8-Jan-25	75.1	72.2	3.1	2 655.7	30.0	958.0	9 031.5	15 451.0	559.3	454.0	10 453.0	3.2	14.0	18.0	69.4	1 046.4	1.9	5.1	24 300.0	
9-Jan-25	75.7	72.7	3.2	2 666.0	30.2	961.1	9 078.5	15 482.0	558.5	456.0	10 927.0	3.2	14.3	18.0	69.7	1 029.5	1.9	5.1	24 300.0	
10-Jan-25	78.1	75.0	3.3	2 689.8	30.4	965.8	9 091.5	15 658.0	560.8	470.5	10 570.0	3.2	14.4	18.1	68.3	1 046.7	1.9	5.3	24 300.0	
13-Jan-25	78.5	75.9	3.4	2 660.9	29.7	958.3	9 094.5	15 901.0	570.5	476.5	10 928.0	3.3	14.4	17.9	68.9	1 067.2	1.9	5.3	24 300.0	
14-Jan-25	77.9	75.3	3.4	2 669.1	29.8	940.0	9 154.0	15 956.0	570.3	474.5	10 951.0	3.2	14.5	17.4	68.7	1 036.4	1.9	5.4	24 300.0	
15-Jan-25	79.5	77.2	3.5	2 692.7	30.6	940.5	9 167.5	15 850.0	567.5	478.8	10 821.0	3.3	14.8	17.1	68.9	1 038.9	1.9	5.7	24 300.0	
16-Jan-25	78.7	76.5	3.7	2 721.8	30.9	942.3	9 230.5	15 963.0	558.5	474.5	10 502.0	3.3	14.6	17.2	67.9	993.1	2.0	5.9	24 300.0	
17-Jan-25	78.4	76.2	3.5	2 703.3	30.4	944.4	9 190.0	16 097.0	558.5	484.3	11 173.0	3.3	14.8	17.1	68.6	986.0	1.9	6.0	24 296.0	
20-Jan-25	78.1	2 707.6	30.5	944.5	9 275.0	16 102.0	994.9	1.9	6.1	24 275.0	
21-Jan-25	77.6	75.0	3.3	2 740.3	30.7	951.1	9 284.5	16 078.0	585.5	490.0	11 559.0	3.3	15.0	16.8	68.8	1 007.1	2.0	6.1	24 275.0	
22-Jan-25	77.4	74.7	3.5	2 756.6	30.8	953.4	9 223.5	15 718.0	585.0	484.3	11 675.0	3.4	14.8	17.1	68.3	1 006.3	2.0	6.2	24 275.0	
23-Jan-25	76.9	74.0	3.5	2 757.8	30.5	951.8	9 232.0	15 668.0	580.8	489.8	11 552.0	3.4	14.9	17.3	68.5	1 005.4	2.0	6.2	24 271.0	
24-Jan-25	76.8	74.0	3.5	2 770.6	30.6	951.5	9 276.0	15 668.0	569.5	486.5	11 593.0	3.5	14.7	17.6	68.7	1 025.1	2.0	6.3	24 267.0	
27-Jan-25	75.4	72.5	3.3	2 733.7	30.0	947.4	9 095.0	15 560.0	562.8	482.0	11 372.0	3.5	14.5	17.7	68.4	1 029.9	2.0	...	23 700.0	
28-Jan-25	75.6	72.9	3.2	2 759.8	30.4	944.3	8 987.0	15 435.0	570.8	485.3	11 374.0	3.6	14.2	17.8	68.1	1 031.9	21 500.0	
29-Jan-25	74.8	72.0	3.2	2 752.9	30.7	949.6	9 068.0	15 499.0	590.3	497.0	11 745.0	3.7	14.1	18.0	67.8	21 496.0	
30-Jan-25	75.1	72.2	3.1	2 795.7	31.6	971.6	9 128.5	15 394.0	598.3	490.3	11 207.0	3.7	13.9	18.0	67.5	21 492.0	
31-Jan-25	74.9	72.0	3.1	2 798.4	31.3	982.6	9 048.0	15 210.0	589.0	482.0	10 987.0	3.8	13.8	17.9	67.0	1 021.2	2.0	...	21 492.0	
3-Feb-25	75.1	72.4	3.3	2 817.2	31.5	965.3	9 099.0	15 208.0	595.3	488.8	11 002.0	3.8	13.7	17.8	67.1	1 034.2	2.0	...	21 483.0	
4-Feb-25	75.6	72.3	3.3	2 844.1	32.3	970.2	9 150.5	15 270.0	604.0	494.5	10 913.0	3.8	13.6	18.2	68.1	1 033.3	1.9	...	21 466.0	
5-Feb-25	74.1	70.7	3.4	2 873.1	32.5	990.3	9 240.0	15 535.0	601.3	493.3	10 514.0	4.0	13.5	18.1	67.2	1 043.1	1.9	6.3	21 466.0	
6-Feb-25	73.8	70.4	3.4	2 852.4	32.2	991.0	9 276.5	15 811.0	616.3	495.3	10 094.0	4.0	13.7	18.1	67.2	1 054.8	2.0	6.3	21 466.0	
7-Feb-25	74.3	70.7	3.3	2 861.1	31.8	978.5	9 407.5	15 756.0	613.8	487.5	10 018.0	4.0	13.7	17.9	66.8	1 076.8	2.0	6.3	21 462.0	
10-Feb-25	75.4	72.0	3.5	2 903.3	32.0	989.1	9 447.5	15 522.0	607.0	491.5	9 714.0	4.3	13.9	18.0	67.7	1 080.6	2.0	6.5	21 453.0	
11-Feb-25	76.6	73.1	3.5	2 905.7	31.9	990.2	9 358.0	15 538.0	602.8	484.0	10 131.0	4.1	14.0	18.3	68.5	...	2.0	6.7	21 440.0	
12-Feb-25	74.9	71.2	3.6	2 903.0	32.4	996.6	9 454.5	15 420.0	602.0	490.3	10 006.0	4.3	13.8	18.3	68.6	1 090.6	2.0	6.8	21 440.0	
13-Feb-25	74.7	71.1	3.6	2 919.0	32.2	997.0	9 485.0	15 374.0	609.5	493.5	10 381.0	4.4	14.0	18.8	68.0	1 069.5	2.0	6.9	21 436.0	
14-Feb-25	74.5	70.7	3.7	2 882.5	32.1	984.0	9 477.0	15 468.0	632.8	496.3	10 159.0	4.2	14.0	19.2	68.3	1 065.6	2.0	6.9	21 431.5	
17-Feb-25	74.9	2 898.5	32.3	981.8	9 395.5	15 490.0	1 069.9	2.0	6.9	21 422.0	
18-Feb-25	75.4	71.8	4.0	2 931.3	32.8	983.2	9 472.0	15 349.0	639.3	502.0	10 301.0	4.2	14.0	19.2	68.8	1 056.5	2.0	6.7	21 408.0	
19-Feb-25	75.7	72.1	4.2	2 923.9	32.6	971.4	9 466.5	15 404.0	626.3	497.5	10 218.0	4.2	14.0	19.4	67.7	1 091.2	2.0	6.7	21 408.0	
20-Feb-25	76.1	72.5	4.1	2 940.6	33.0	980.7	9 563.5	15 665.0	620.0	498.0	10 075.0	4.0	14.0	19.8	67.5	1 087.1	2.1	6.7	21 403.0	
21-Feb-25	74.1	70.4	4.1	2 936.1																

Weekly Highlights on Price Movements of Selected Exchange Rates (currency per USD)- Week ending March 07, 2025

Region/Country	Currency Name	Currency Code	Rates				% change		
			Value at end of (07/03/2025)	Value at end of (28/02/2025)	Benchmark (02/24/2022)	Value at end of (07/03/2024)	Weekly	Benchmark (02/24/2022)	Annual
Africa									
Algeria	<i>Algerian Dinar</i>	DZD	133.15	135.04	141.14	134.23	1.40	5.66	0.80
Angola	<i>New Kwanza</i>	AOA	921.12	921.12	497.34	843.00	0.00	-85.21	-9.27
Botswana	<i>Pula</i>	BWP	13.62	13.82	11.64	13.63	1.49	-16.99	0.08
Burundi	<i>Burundi Franc</i>	BIF	2 919.20	2 930.95	2 004.43	2 854.05	0.40	-45.64	-2.28
Cabo Verde	<i>Escudo</i>	CVE	102.31	106.36	99.19	101.41	3.81	-3.15	-0.88
Comoros	<i>Comoros Franc</i>	KMF	453.71	473.21	440.61	449.82	4.12	-2.97	-0.87
Congo. Dem. Rep. of	<i>Congolese Franc</i>	CDF	2 864.50	2 864.50	1 996.09	2 465.00	0.00	-43.51	-16.21
Djibouti	<i>Djibouti Franc</i>	DJF	177.71	178.03	177.97	177.68	0.18	0.15	-0.02
Egypt	<i>Egyptian Pound</i>	EGP	50.68	50.65	15.70	49.35	-0.06	-222.79	-2.69
Ethiopia	<i>Birr</i>	ETB	127.65	127.60	50.93	56.76	-0.04	-150.64	-124.89
Gambia. The	<i>Gambian Dalasi</i>	GMD	70.85	70.85	53.43	67.75	0.00	-32.61	-4.57
Ghana	<i>New Cedi</i>	GHS	15.50	15.50	6.73	12.78	0.00	-130.31	-21.25
Guinea	<i>Guinea Franc</i>	GNF	8 650.08	8 625.82	8 982.02	8 594.49	-0.28	3.70	-0.65
Kenya	<i>Kenyan Shilling</i>	KES	128.83	129.15	113.85	142.62	0.25	-13.16	9.67
Liberia	<i>Liberian Dollar</i>	LRD	198.50	198.46	193.37	192.43	-0.02	-2.66	-3.15
Libya	<i>Libyan Dinar</i>	LYD	4.84	4.90	4.60	4.82	1.08	-5.42	-0.40
Madagascar	<i>Ariary</i>	MGA	4 685.39	4 705.90	3 985.72	4 517.91	0.44	-17.55	-3.71
Malawi	<i>Kwacha</i>	MWK	1 733.51	1 733.31	807.63	1 681.61	-0.01	-114.64	-3.09
Mauritania	<i>Ouguiya</i>	MRU	39.89	39.86	36.39	39.80	-0.08	-9.62	-0.23
Mauritius	<i>Mauritius Rupee</i>	MUR	45.57	46.86	44.10	46.50	2.75	-3.34	2.00
Morocco	<i>Dirham</i>	MAD	9.73	9.97	9.49	10.00	2.40	-2.45	2.79
Mozambique	<i>New Metical</i>	MZN	63.83	63.83	63.88	64.06	0.00	0.08	0.35
Nigeria	<i>Naira</i>	NGN	1 514.51	1 500.31	416.21	1 589.93	-0.95	-263.88	4.74
Rwanda	<i>Rwandan Franc</i>	RWF	1 406.47	1 407.05	1 018.25	1 281.66	0.04	-38.13	-9.74
São Tomé & Príncipe	<i>Dobra</i>	STN	23.25	23.71	21.92	22.75	1.91	-6.08	-2.20
Seychelles	<i>Seychelles Rupee</i>	SCR	14.63	14.60	14.16	13.89	-0.18	-3.34	-5.33
Sierra Leone	<i>Leone</i>	SLL	22 789.82	22 804.33	11 628.36	22 557.93	0.06	-95.98	-1.03
Somalia	<i>Somali Shilling</i>	SOS	571.50	572.75	581.50	571.25	0.22	1.72	-0.04
South Africa	<i>Rand</i>	ZAR	18.29	18.66	15.47	18.71	1.99	-18.26	2.22
South Sudan	<i>South Sudanese Pound</i>	SSP	4 444.70	4 436.80	426.14	1 582.90	-0.18	-943.01	-180.79
Sudan	<i>Sudanese Pound</i>	SDG	598.80	598.85	443.10	598.10	0.01	-35.14	-0.12
Tanzania	<i>Tanzanian Shilling</i>	TZS	2 620.77	2 594.07	2 314.69	2 545.89	-1.03	-13.22	-2.94
Tunisia	<i>Tunisian Dinar</i>	TND	3.09	3.17	2.91	3.10	2.47	-6.40	0.30
Uganda	<i>Uganda Shilling</i>	UGX	3 669.95	3 677.02	3 528.73	3 904.65	0.19	-4.00	6.01
Zambia	<i>Zambian Kwacha</i>	ZMK	28 525.00	28 545.00	17 675.00	24 177.00	0.07	-61.39	-17.98
Zimbabwe	<i>Zimbabwe Gold</i>	ZIG	26.64	26.56	115.90	16 473.79	-0.30	77.01	99.84
CFA zone Countries*	<i>CFA Franc</i>	XOF	604.95	630.94	587.44	599.76	4.12	-2.98	-0.87
Selected Major Global Currencies									
Europe	<i>Euro</i>	EUR	0.92	0.96	0.90	0.91	4.13	-2.97	-0.86
United Kingdom	<i>British Pound</i>	GBP	0.77	0.79	0.75	0.78	2.47	-3.54	0.90
Japan	<i>Japanese Yen</i>	JPY	147.49	150.37	115.34	148.11	1.92	-27.87	0.42
China	<i>Chinese Yuan</i>	CNY	7.24	7.29	6.33	7.20	0.65	-14.50	-0.59
Russia	<i>Russian Ruble</i>	RUB	90.00	89.46	87.25	90.50	-0.61	-3.15	0.55

Sources: AfDB Statistics Department and Bloomberg